

**SPARE PARTS CATALOGUE
ERSATZTEILKATALOG
CATALOGUE PIECES DETACHEES
CATALOGO PARTI RICAMBIO
CATALOGO DE PIEZAS DE RECAMBIO
CATALOGO PECAS, DE REPOSICAO**

Catalogo parti di ricambio valido
dalla matricola 2809976 alla matricola 2821139

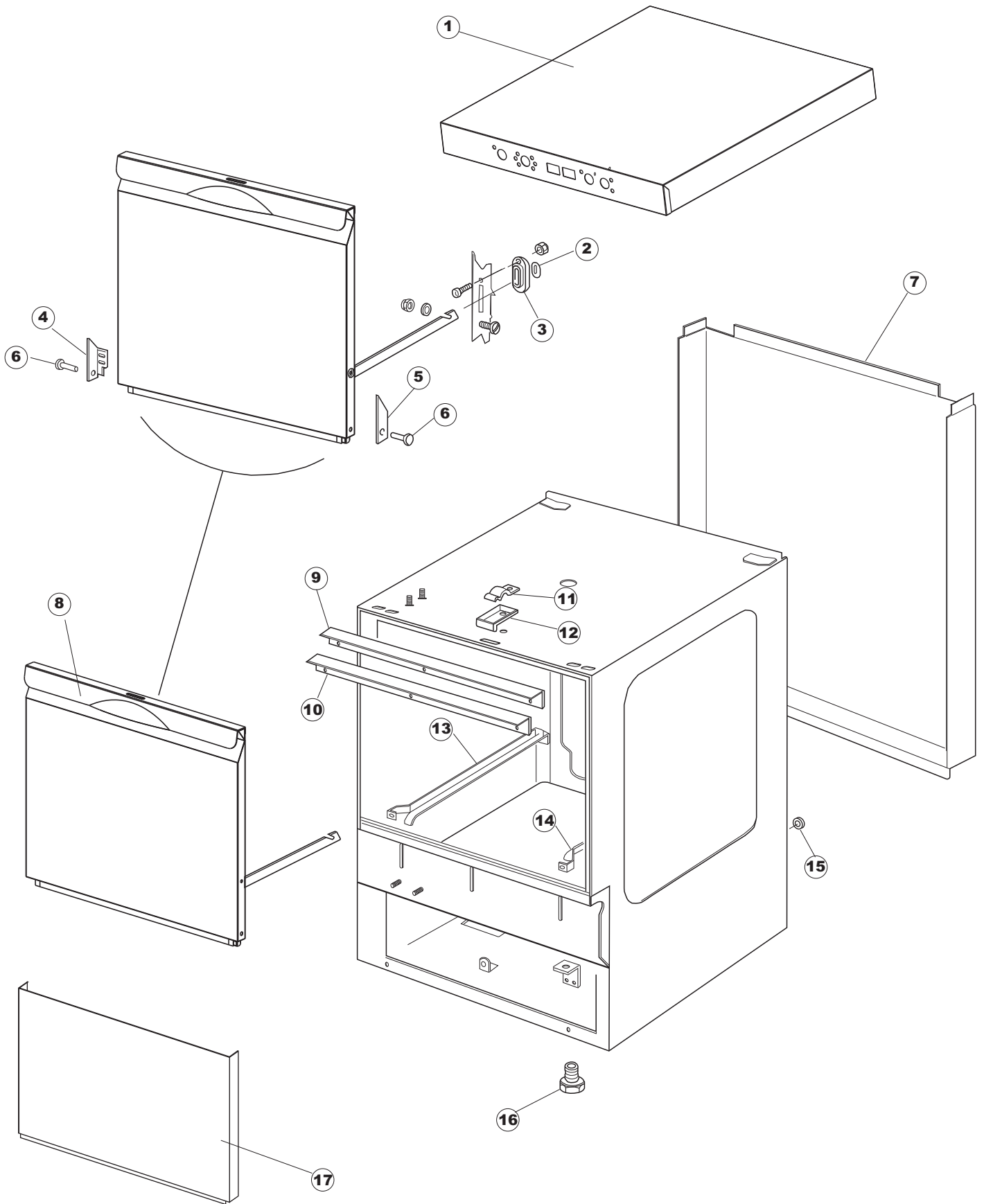
Catalogue pieces detachees
du numero de Série n. 2809976 jusqu'à n. 2821139

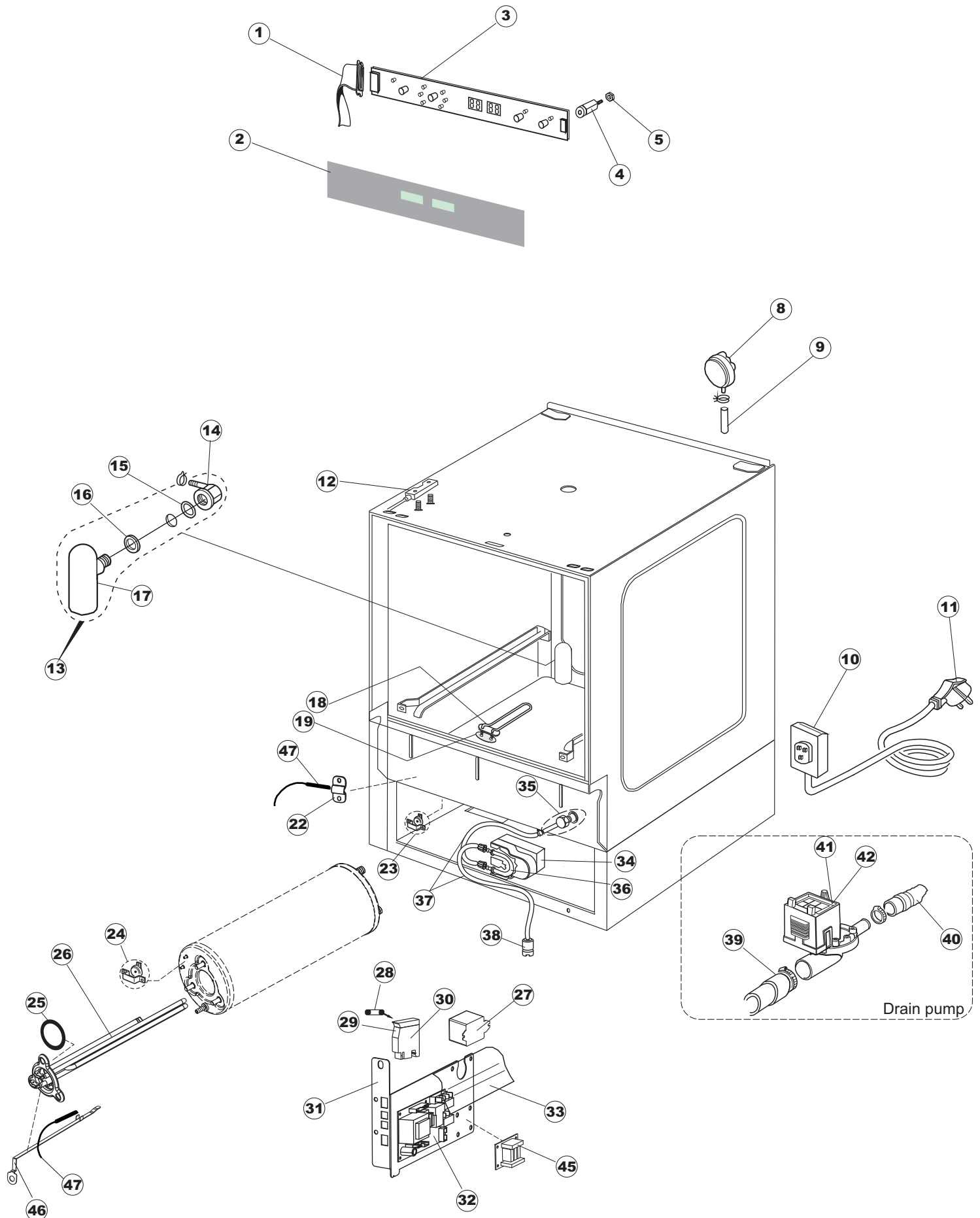
Ersatzteilkatalog
gültig ab Serien-Nr. 2809976 bis Serien-Nr. 2821139

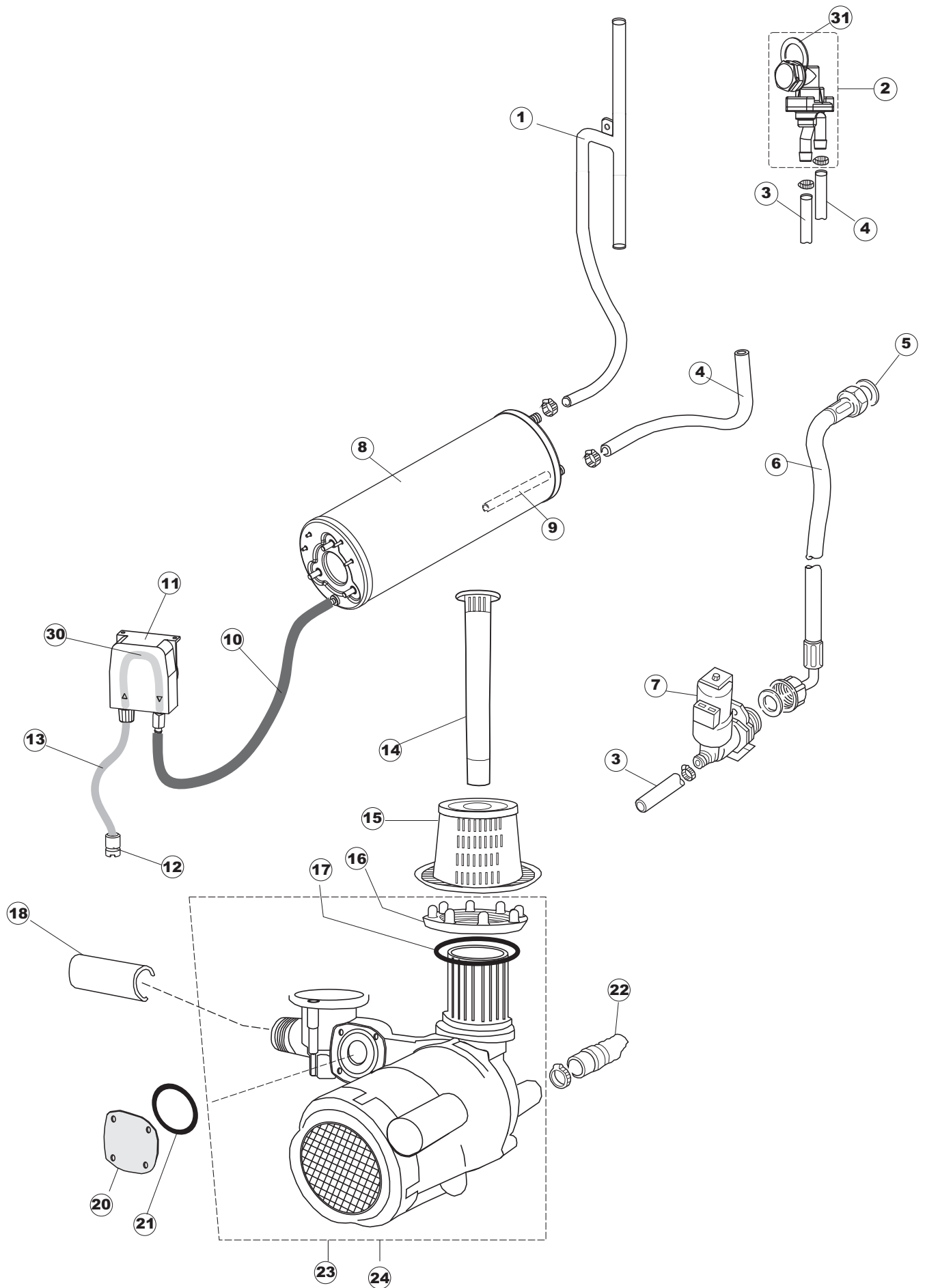
Spare parts catalogue
valid from serial no. 2809976 to serial no. 2821139

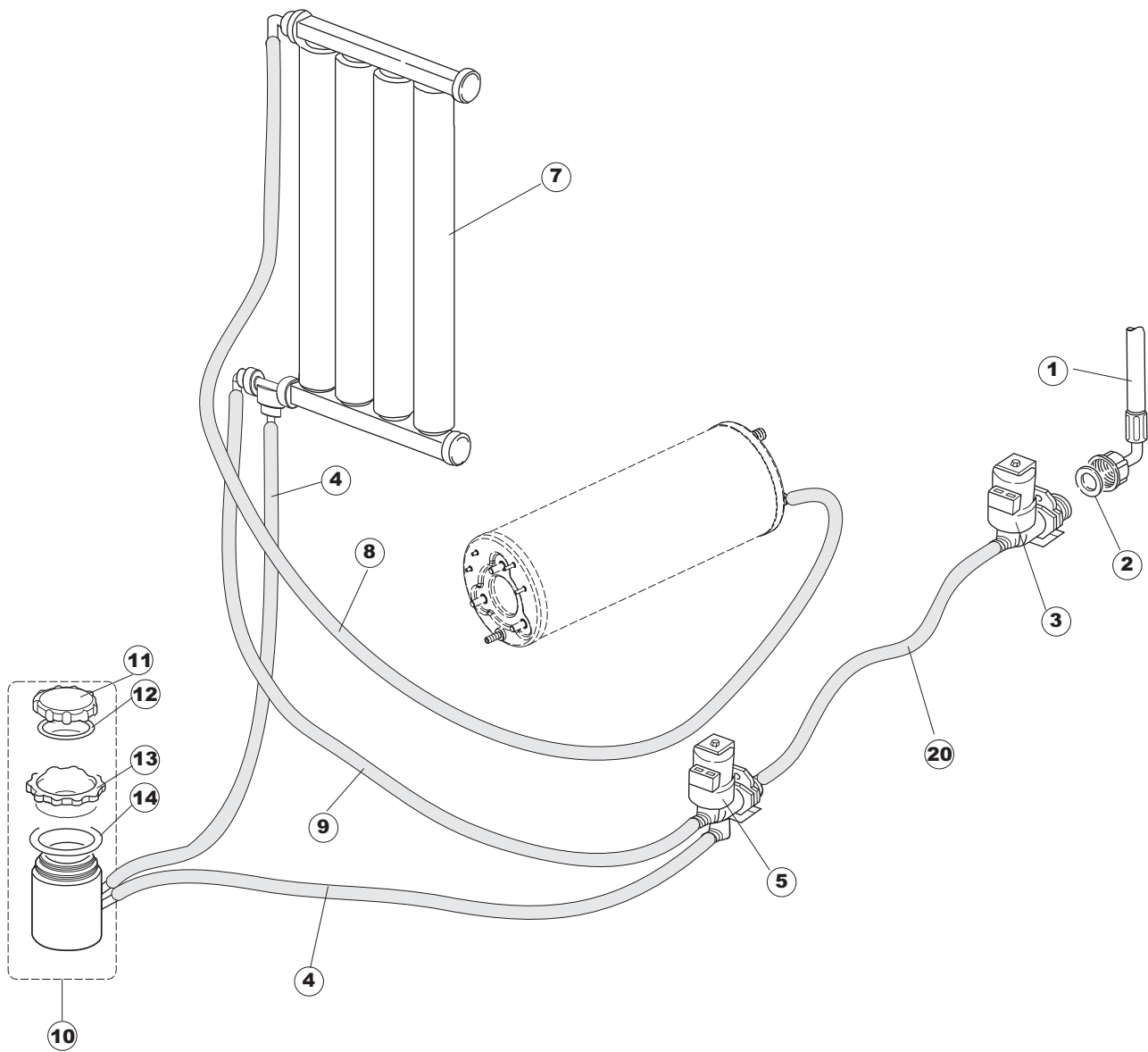
Catálogo de peças de reposição
número de série 2809976 até o número de série 2821139

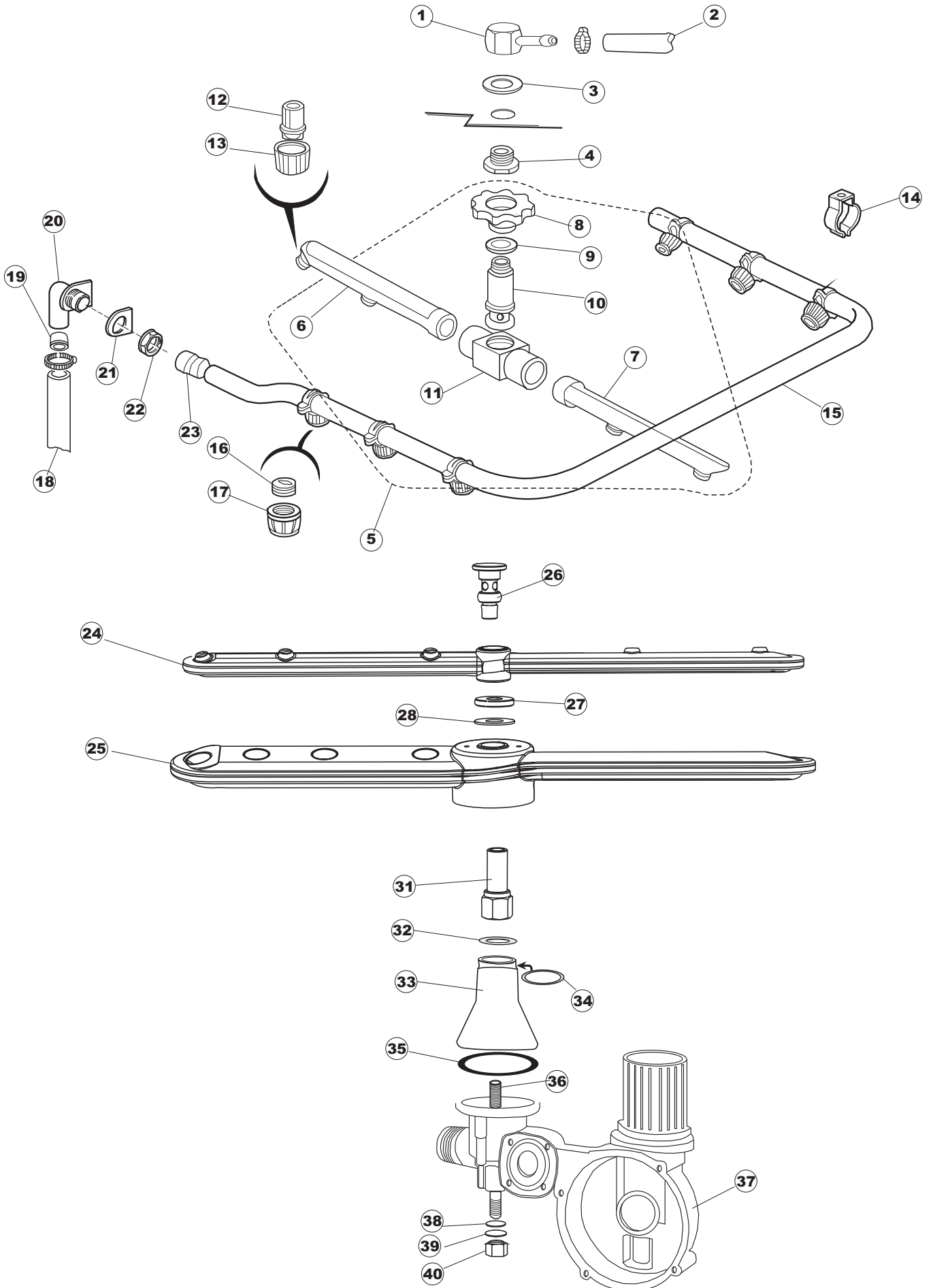
40 A

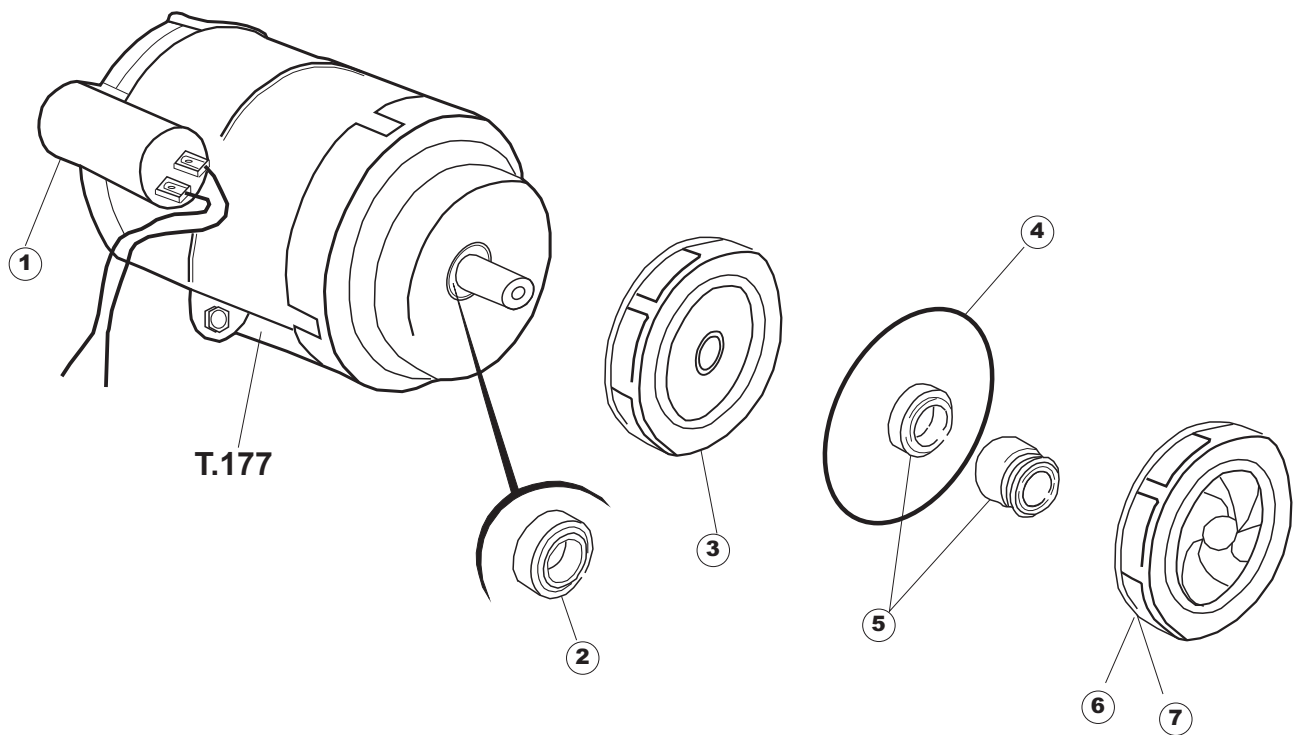












(*) Recommended spare part.

Page	Spare part position	Spare part code no.	Old code number	Description	U.m.
1	1	004185		COVER UGS410 BOBECK	NR
1	2	028078		DOOR SHOULDER PLATE FOR GLASSWASHER	NR
1	3	307005		ROD OF TOP DOOR-STOP BAR	NR
1	4	311009		RIGHT DOOR HINGE FOR GLASSWASHERS	NR
1	5	311008		RIGHT DOOR HINGE FOR GLASSWASHERS	NR
1	6	325034		PIVOT	NR
1	7	022128		BACK PANEL	NR
1	8	029456		COMPLETE DOOR	NR
1	9	437058		DOOR GASKET FOR GLASSWASHER	NR
1	10	033294		DOOR GASKET BRACKET FOR GLASSWASHER	NR
1	11	449036		DOOR LOCK SPRING FOR GLASSWASHERS	NR
1	12	329012		DOOR LOCK FOR GLASSWASHERS	NR
1	13	015039		LEFT RACK SLIDE	NR
1	14	015038		RIGHT RACK SLIDE	NR
1	15	459006		CHOCK D INT 9 EST 16	NR
1	16	461010		HEXAGONAL FOOT FOR GLASSWASHER (PART NR. REPLACED BY 461031)	
1	16	461031		HEXAGONAL FOOT FOR GLASSWASHER	NR
1	17	012188		FRONT PANEL	NR
2	1	211017		FLAT CABLE	NR
2	2	026516		CONTROL ADHESIVE INTERFACE	NR
2	3	227084		PUSH BUTTONS ASSEMBLY	NR
2	4	419036		INTERFACE BOARD DISTANCE KEEPERS	NR
2	5	417119		NUT	NR
2	8	224004		PRESSURE SWITCH 35/17	NR
2	9	143013		PIPE	MT
2	10	459018		PART NUMBER NO LONGER AVAILABLE	
2	11	299040		PLUG SCHUCKO 90- CABLE 1=2,5 MT	NR
2	12	80871		MAGNETIC DOOR SWITCH	NR
2	13	984005		AIR TRAP, ASSY	NR
2	14	468029		AIR TRAP CONNECTION OF PRESSURE SWITCH	NR
2	15	456020		O-RING	NR
2	16	437019		PACKING FOR AIR TRAP OF PRESSURE SWITCH	NR

(*) Recommended spare part.

Page	Spare part position	Spare part code no.	Old code number	Description	U.m.
2	17	107005		AIR TRAP FOR PRESSURE SWITCH	NR
2	18	230098		TANK HEATING ELEMENT	NR
2	19	437086		PACKING OF THE TANK RESISTANCE	NR
2	22	028105		FIXING PLATE	NR
2	23	236047		SAFETY TANK THERMOSTAT 95C	NR
2	24	236039		SAFETY THERMOSTAT FOR BOILER	NR
2	25	456075		O-RING	NR
2	26	230113		HEATING ELEMENT	NR
2	27	229039		RELAY	NR
2	28	228010		FUSE	NR
2	29	210010		FUSE-HOLDER	NR
2	30	210011		PLATE	NR
2	31	035114		.	NR
2	32	215034-4		MAIN BOARD	NR
2	33	214077		TRANSP. SAFETY PLATE 44	NR
2	34	209039		PART NUMBER NO LONGER AVAILABLE (PART NR. REPLACED BY 209039C)	
2	35	468151		PART NUMBER NO LONGER AVAILABLE (PART NR. REPLACED BY 999348)	
2	35	999348		DETERGENT TANK FITTING	NR
2	36	143267		PIPE	NR
2	37	143194		PIPE	MT
2	38	121993		FILTER AID DISPENSER	NR
2	39	127054		DRAIN HOSE	NR
2	40	143137		DRAIN HOSE	NR
2	41	130178		PART NUMBER NO LONGER AVAILABLE (PART NR. REPLACED BY 999364)	
2	41	999364		DRAIN PUMP + BRACKET 220/240-50HZ	NR
2	42	130183		DRAIN PUMP 60HZ	NR
2	45	215036		EXPANSION CARD FOR ADD-ONS	NR
2	46	69871		PROBE HOLDER	NR
2	47	231016		TEMPERATURE PROBE	NR
3	1	143239		PIPE	NR
3	2	144030		NO RETURN VALVE	NR
3	3	143236		PIPE	NR

(*) Recommended spare part.

Page	Spare part position	Spare part code no.	Old code number	Description	U.m.
3	4	143237		PIPE	NR
3	5	437041		GASKET	NR
3	6	143170		PART NUMBER NO LONGER AVAILABLE (PART NR. REPLACED BY 143270)	
3	6	143270		INLET WRAS PIPE	NR
3	7	240011		FILL VALVE	NR
3	8	104056		BOILER	NR
3	9	143228		PIPE	NR
3	10	143005		LINEN RUBBER PIPE 5X12 - BLACK	MT
3	11	209036		PART NUMBER NO LONGER AVAILABLE (PART NR. REPLACED BY 209042C)	
3	11	209042C		DOSING PUMP	NR
3	12	121993		FILTER AID DISPENSER	NR
3	13	H.775601		PIPE	MT
3	14	142051		OVERFLOW PIPE	NR
3	15	121144		PUMP ASPIRATION FILTER	NR
3	16	429065		RING NUT	NR
3	17	437079		GASKET	NR
3	18	127053		UPPER ASSEMBLY	NR
3	20	480087		PLUG	NR
3	21	437078		GASKET	NR
3	22	143120		DRAIN HOSE	NR
3	23	999135		WASH-BODY UNIT AND PUMP 50HZ	NR
3	24	999137		WASH-BODY UNIT AND PUMP 60HZ	NR
3	30	143266		PIPE	NR
3	31	437080		GASKET	NR
4	1	143170		PART NUMBER NO LONGER AVAILABLE (PART NR. REPLACED BY 143270)	
4	1	143270		INLET WRAS PIPE	NR
4	2	437041		GASKET	NR
4	3	240016		SOLENOID VALVE	NR
4	4	143241		PIPE	NR
4	5	999288		SOLENOID VALVE	NR
4	7	117007		WATER SOFTNER	NR
4	8	143248		PIPE	NR

(*) Recommended spare part.

Page	Spare part position	Spare part code no.	Old code number	Description	U.m.
4	9	143264		PIPE SWITCH VALVE > SALT CONTAINER	NR
4	10	406998		SALT CONTAINER UNIT	NR
4	11	480005		SALT CONTAINER SCREW CAP	NR
4	12	456052		O-RING	NR
4	13	429011		RING NUT	NR
4	14	437034		GASKET	NR
4	20	143004		PIPE	MT
5	1	468165		UPPER RINSE PIPE CONNECTOR	NR
5	2	143239		PIPE	NR
5	3	437078		GASKET	NR
5	4	429050		RING NUT	NR
5	5	993031		RINSE ASSEMBLY	NR
5	6	106035		LEFT RINSE ARM	NR
5	7	106036		RIGHT RINSE ARM	NR
5	8	429008		RING NUT	NR
5	9	437008		PACKING FOR RINSING - UPPER	NR
5	10	325001		PIVOT	NR
5	11	129002		RINSE-ARM SUPPORT - UPPER	NR
5	12	140007		RINSE-NOZZLE FOR GLASSWASHER (S6514)	NR
5	13	429006		RING NUT	NR
5	14	449045		UPPER WASH-ARM RETAINING CLIP	NR
5	15	129053		TOP WASH ARM	NR
5	16	119003		WASH JET IMPELLER FOR GLASSWASHER	NR
5	17	140010		WASH-NOZZLE FOR GLASSWASHER (S6515)	NR
5	18	127053		UPPER ASSEMBLY	NR
5	19	199051		UPPER PLAST.PRESSURE DISTRIBUTION E40	NR
5	20	111026		UPPER MANIFOLD	NR
5	21	437080		GASKET	NR
5	22	417038		NUT FOR WASHING MANIFOLD	NR
5	23	441010		SEALING INSERT	NR
5	24	129078		RINSE ARM	NR
5	25	129072		COMPLETE WASH ARM	NR

(*) Recommended spare part.

Page	Spare part position	Spare part code no.	Old code number	Description	U.m.
5	26	80700		PIVOT	NR
5	27	80697		RING NUT	NR
5	28	80623		PART NUMBER NO LONGER AVAILABLE (PART NR. REPLACED BY 437117)	
5	28	437117		WASHER	NR
5	31	325102		PIVOT	NR
5	32	199052		SHUTTER WATER CIRCULAR	NR
5	33	115110		MAIN MANIFOLD	NR
5	34	303018		SEALING AND SLIDING RING CL.3	NR
5	35	456061		O-RING	NR
5	36	478056		SUPPORT FOR WASHING PIN COMB FOR GLASSWA	NR
5	37	111023		LOWER ASSEMBLY FOR GLASSWASHER	NR
5	38	456019		O-RING	NR
5	39	456006		O-RING	NR
5	40	417104		PART NUMBER NO LONGER AVAILABLE	
6	1	206009		CAPACITOR	NR
6	2	314009		WASH-PUMP BEARING	NR
6	3	315024		PART NUMBER NO LONGER AVAILABLE	
6	4	456074		O-RING	NR
6	5	141007		WASH PUMP SHAFT SEAL FOR GLASSWASHER	NR
6	6	124049		ELECTROPUMP IMPELLER	NR
6	7	124051		ELECTROPUMP IMPELLER	NR