

NO. E1AW-2054

ISSUED: JUL. 1998

REVISED: DEC. 2011



HOSHIZAKI SELF-CONTAINED CUBER

**MODEL IM-45CLE
IM-45CLE-25**

PARTS LIST

[HE, GENERAL (50Hz), EXPORT (60Hz), AUSTRALIA, OCEANIA, HSP, KOREA, CHINA]

H-1	MAY. 1998	E-0	DEC. 2004	V-0	JAN. 2010
J-0	DEC. 1998	E-1	APR. 2005	L-0	JAN. 2011
K-0	DEC. 1999	E-2	NOV. 2005		
K-1	FEB. 2000	F-0	DEC. 2005		
A-0	DEC. 2000	G-0	JAN. 2007		
B-0	DEC. 2001	G-1	JUN. 2007		
B-1	JUN. 2002	G-2	DEC. 2007		
C-0	DEC. 2002	T-0	JAN. 2008		
D-0	DEC. 2003	T-1	AUG. 2008		
D-1	NOV. 2004	U-0	JAN. 2009		

MATERIAL ABBREVIATIONS

ALUMINUM

AL = Aluminum

COPPER

CU = Copper

PLASTIC

ABS = Acrylonitrile -butadiene - styrene
AC = Polyacetal
EVA = Ethylene vinyl acetate
PA = Polyamide = Nylon
PC = Polycarbonate
PE = Polyethylene
PES = Polyester
PETP = Polyethylene terephthalate = Tetlon
PP = Polypropylene
PS = Polystyrene
PTFE = Polytetrafluoroethylene = Teflon
PUR = Polyurethane
PVC = Polyvinyl chloride

RUBBER

VN = Vinyl Nitrile
EPDM = EP rubber
NBR = Nitrile butadiene rubber
NR = Natural rubber
NP = Neoprene
SI.R = Silicone rubber
SY.R = Synthetic rubber
EPH = Epichlorohydrin

STEEL

GS = Galvanized steel
SS = Stainless steel
PS = Plated steel
PAS = Primed steel

AUXILIARY CODE

K-0

Designates the year. "K" indicates the year 2000. Years progress or regress in alphabetical order. "J" is 1999, "L" is 2001, "M" is 2002, and so on. The letters "I" and "O" were skipped.
Designates significant part changes within the same year. Base is 0 and this number advances for each change.

Example: P-1

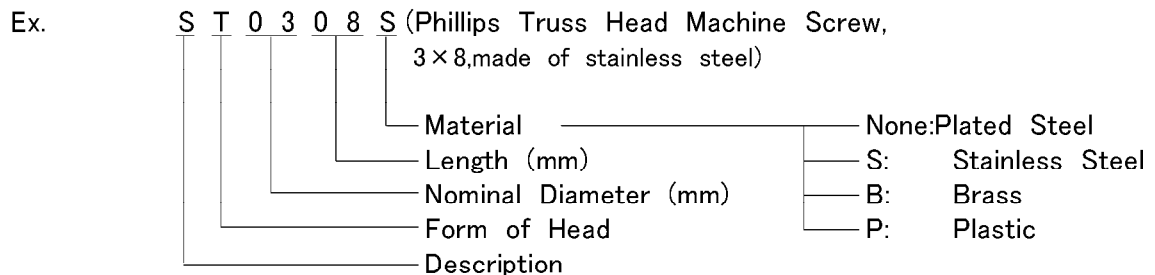
"P" indicates 2004.
"1" indicates the first significant part change for 2004.

MARKS LOCATED UNDER THE AUXILIARY CODE

- = Part deleted.
x = Part deleted and replaced by "o" part.
o = New part in place of "x" part.

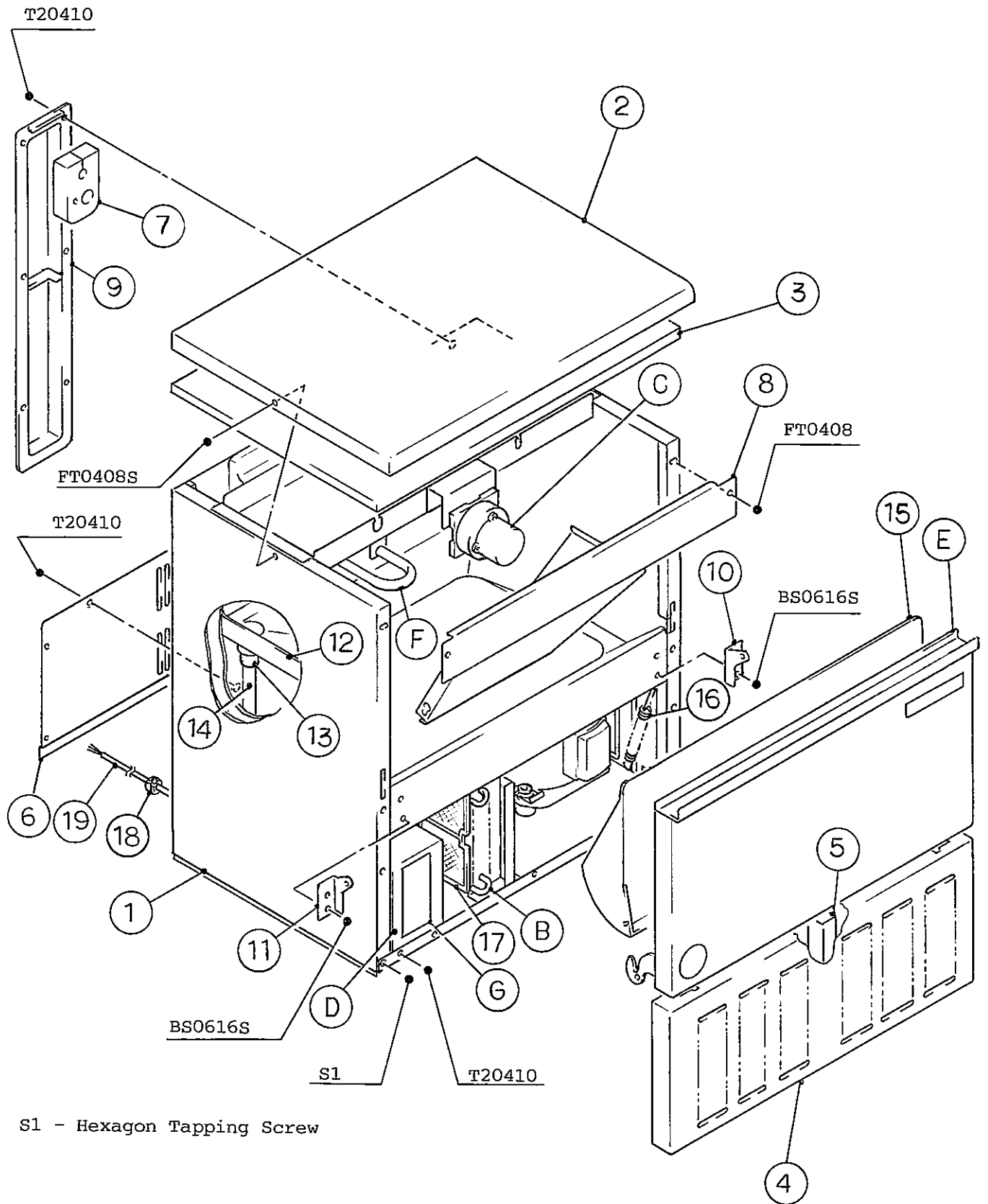
FASTENER ABBREVIATION LIST

ST	=	Phillips Truss Head Machine Screw
SP	=	Phillips Pan Head Machine Screw
SF	=	Phillips Flat Head Machine Screw
SS	=	Phillips Pan Head Machine Screw with Split Lock Washer
SW	=	Phillips Pan Head Machine Screw with Split Lock Washer and Flat Washer
T1	=	Phillips Truss Head Tapping Screw (Correspond to Type A)
T2	=	Phillips Truss Head Tapping Screw (Correspond to Type B)
T3	=	Phillips Truss Head Tapping Screw (Correspond to Type C)
FT	=	Phillips Truss Head Tapping Screw (Special)
BH	=	Hexagon Head Bolt
BC	=	Socket Head Cap Screw
BS	=	Hexagon Bolt with Split Washer
BW	=	Hexagon Bolt with Split Washer and Flat Washer
BF	=	Hexagon Flange Bolt
BR	=	Cross-Recessed Hexagon Head Bolt
BRW	=	Cross-Recessed Hexagon Head Bolt with Split Lock Washer and Flat Washer
WL	=	Split Lock Washer
WT	=	External Tooth Washer
WF	=	Flat Washer
WS	=	Spring Washer
NH	=	Hexagon Nut
NF	=	Hexagon Flange Nut
NC	=	Hexagon Cap Nut
NS	=	Square Nut
NW	=	Wing Nut



(Note) Second character is numerical except the list.
 Ex: S1,S2,B3 etc.

And abbreviations and names are shown under the illustration.

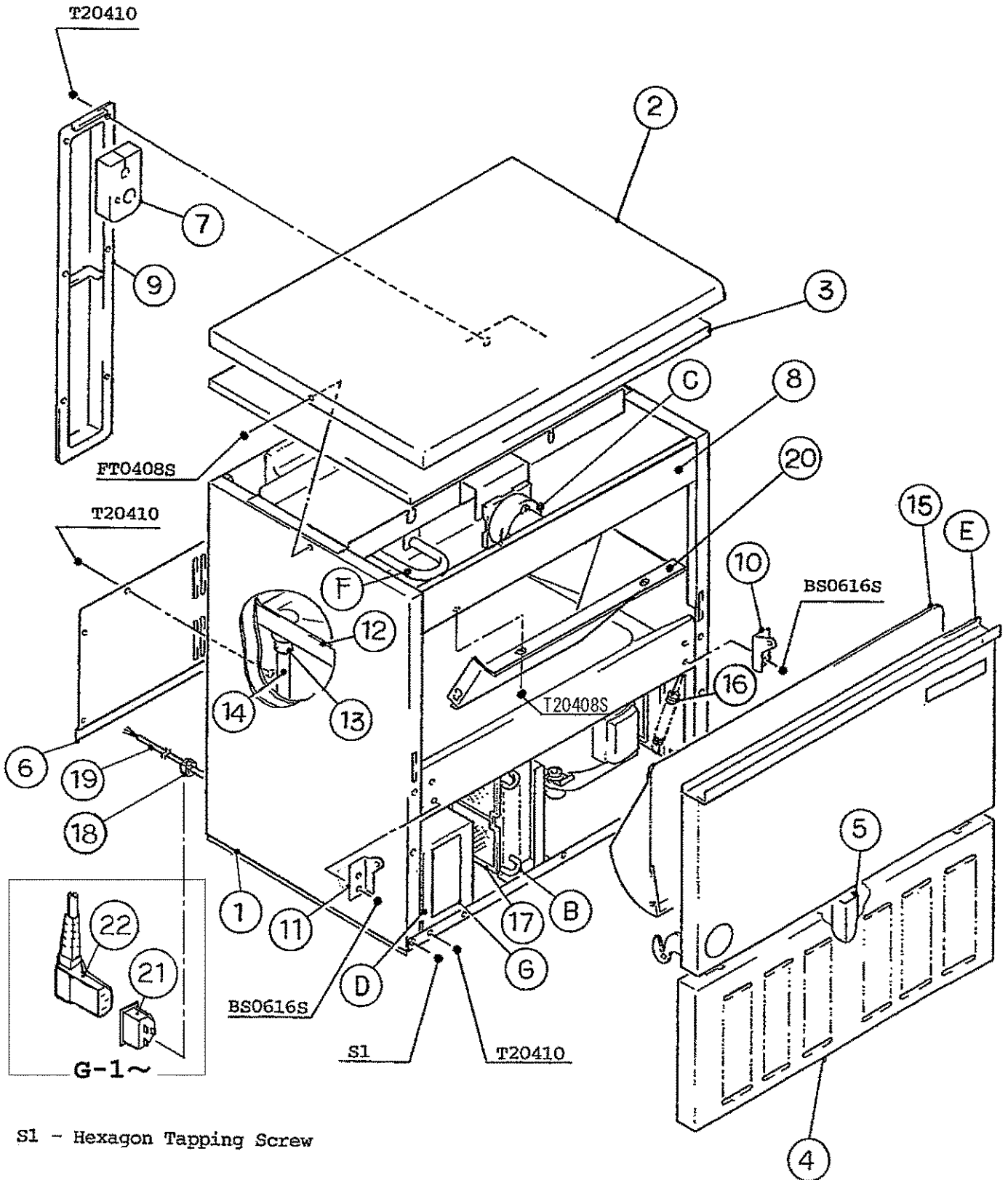


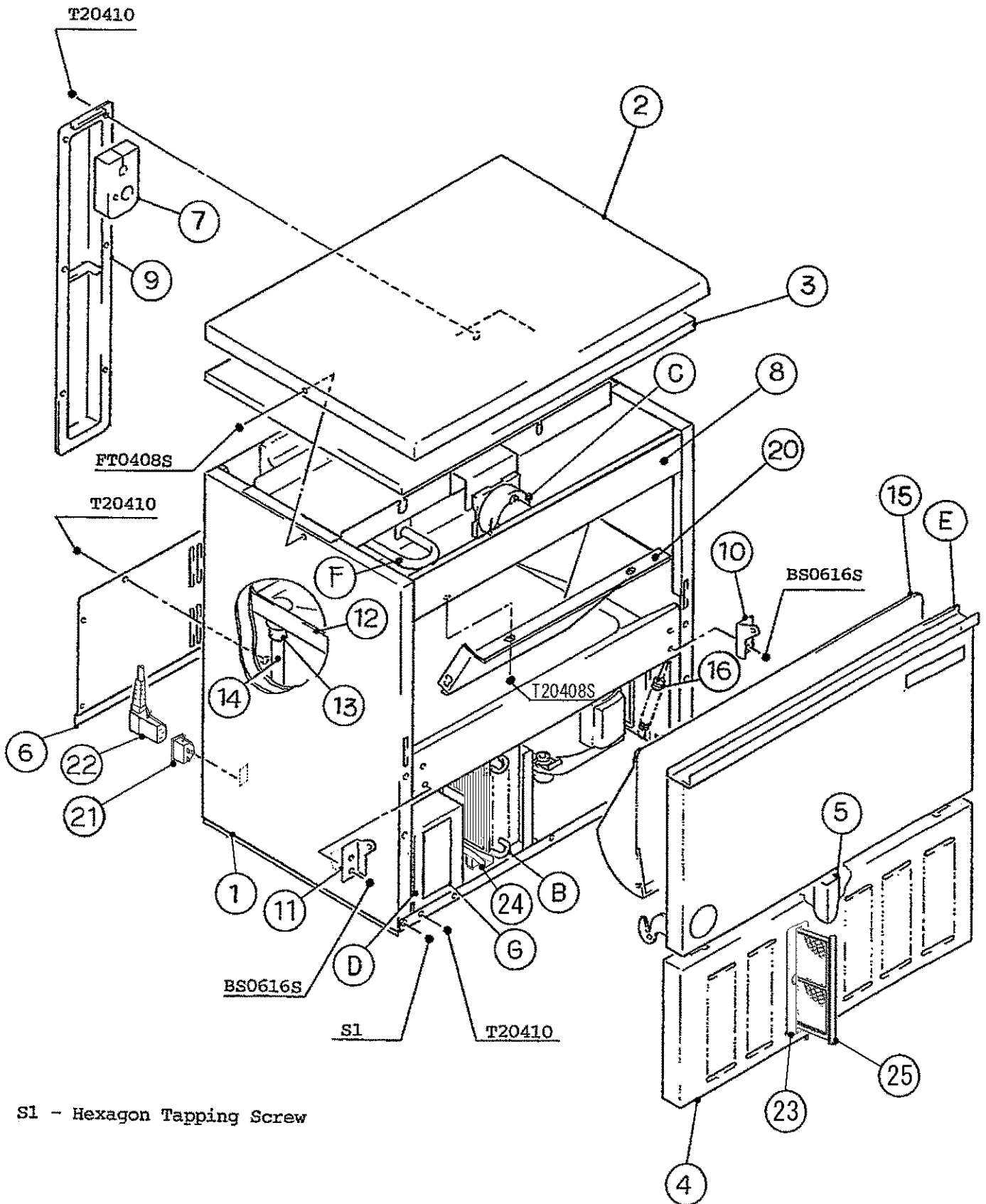
S1 - Hexagon Tapping Screw

IM-45CLE-25
IM-45CLE

A. ICE CUBER ASSY

(E-2) to (T-0)
(D-0) (D-1) (E-0) (E-1)
(A-0) (B-0) (B-1) (C-0)
(H-1) (J-0) (K-0) (K-1)





S1 - Hexagon Tapping Screw

HE, GENERAL(50Hz), EXPORT(60Hz), AUSTRALIA, OCEANIA, HSP,KOREA

MODEL : IM-45CLE-25, IM-45CLE				TITLE : A. ICE CUBER ASSY				
INDEX NO.	DESCRIPTION	MATERIAL OR MODEL NUMBER	PART NUMBER	REQ'D NUMBER				
				H-1 J-0 K-0	K-1 A-0 B-0	B-1 C-0 D-0	D-1 E-0	
B	REFRIGERATION UNIT	(IM-45CLE-25)	1H1769A01	1	1	1	1	
			1H3339A01					
	REFRIGERATION UNIT	(IM-45CLE)	-	1	1	1	1	
C	ICE MAKING MECHANISM ASSY	(IM-45CLE-25)	1H1770A01	1	-			
			1H1770A02		1	1	1	
	ICE MAKING MECHANISM ASSY	(IM-45CLE)	-	1	1	1	1	
D	CONTROL BOX ASSY		-	2H3637A01	1	-		
			-	2H3637A02		1	1	-
			-	2H3637A03				1
			-	2H6751A01				
E	DOOR ASSY		-	3X1614A01	1	1	1	
			-	3Y2781A01				
			-	3Y2905A01				
F	WATER CIRCUIT	-	3H9600A02	1	1	1	1	
G	LABEL LOCATION		-	3X1619A01	1	1	1	
			-	3X1619A02				
1	UNIT FRAME	S.S, G.S	1H1760G01	1	1	-		
		S.S, G.S	1H1760G02			1	1	
		S.S, G.S	1H1760G03					
2	TOP PANEL	S.S	3H9606-03	1	1	1	1	
3	INSULATION - TOP PANEL	PE	3X1613G01	1	1	1	1	
4	FRONT PANEL	S.S	3X1615-01	1	1	1	1	
5	SEAL (A)	PE	4H4359-01	1	1	1	1	
6	REAR PANEL	G.S	3X1616-01	1	1	1	1	
7	INSULATION	PE	4X5295-01	1	1	1	1	
8	FRONT FRAME	S.S	3X1617G01	1	1	-		
		S.S	3X6086-02			1	1	
9	PIPE COVER	G.S	3H0172-02	1	1	1	1	
10	HINGE (RIGHT)	S.S	4H2583-01	1	1	1	1	
11	HINGE (LEFT)	S.S	4H2584-01	1	1	1	1	
12	DRAIN PAN	ABS	2H1440-01	1	1	1	1	
13	DRAIN TUBE	SI	4H2585-01	1	1	1	1	
14	DRAIN PIPE	ABS	4H1141-12	1	1	1	1	
15	SLOPE	ABS	2H1349-02	1	1	1	1	

HE, GENERAL(50Hz), EXPORT(60Hz), AUSTRALIA, OCEANIA, HSP,KOREA

MODEL : IM-45CLE-25, IM-45CLE				TITLE : A. ICE CUBER ASSY				
INDEX NO.	DESCRIPTION	MATERIAL OR MODEL NUMBER	PART NUMBER	REQ'D NUMBER				
				E-1	E-2 F-0 G-0	G-1	G-2 T-0	
B	REFRIGERATION UNIT	(IM-45CLE-25)	1H1769A01	1				
			1H3339A01		1	1	1	
	REFRIGERATION UNIT	(IM-45CLE)	-	1	1	1	1	
C	ICE MAKING MECHANISM ASSY	(IM-45CLE-25)	-					
			1H1770A02	1	1	1	1	
	ICE MAKING MECHANISM ASSY	(IM-45CLE)	-	1	1	1	1	
D	CONTROL BOX ASSY		-					
			-					
			2H3637A03	-				
			2H6751A01	1	1	1	1	
E	DOOR ASSY		3X1614A01	1	1	1x		
			3Y2781A01			○1	-	
			3Y2905A01				1	
F	WATER CIRCUIT	-	3H9600A02	1	1	1	1	
G	LABEL LOCATION		3X1619A01	-				
			3X1619A02	1	1	1	1	
1	UNIT FRAME		-					
			S.S, G.S	1H1760G02	1	1	-	
			S.S, G.S	1H1760G03			1	1
2	TOP PANEL	S.S	3H9606-03	1	1	1	1	
3	INSULATION - TOP PANEL	PE	3X1613G01	1	1	1	1	
4	FRONT PANEL	S.S	3X1615-01	1	1	1	1	
5	SEAL (A)	PE	4H4359-01	1	1	1	1	
6	REAR PANEL	G.S	3X1616-01	1	1	1	1	
7	INSULATION	PE	4X5295-01	1	1	1	1	
8	FRONT FRAME		-					
			S.S	3X6086-02	1	1	1	1
9	PIPE COVER	G.S	3H0172-02	1	1	1	1	
10	HINGE (RIGHT)	S.S	4H2583-01	1	1	1	1	
11	HINGE (LEFT)	S.S	4H2584-01	1	1	1	1	
12	DRAIN PAN	ABS	2H1440-01	1	1	1	1	
13	DRAIN TUBE	SI	4H2585-01	1	1	1	1	
14	DRAIN PIPE	ABS	4H1141-12	1	1	1	1	
15	SLOPE	ABS	2H1349-02	1	1	1	1	

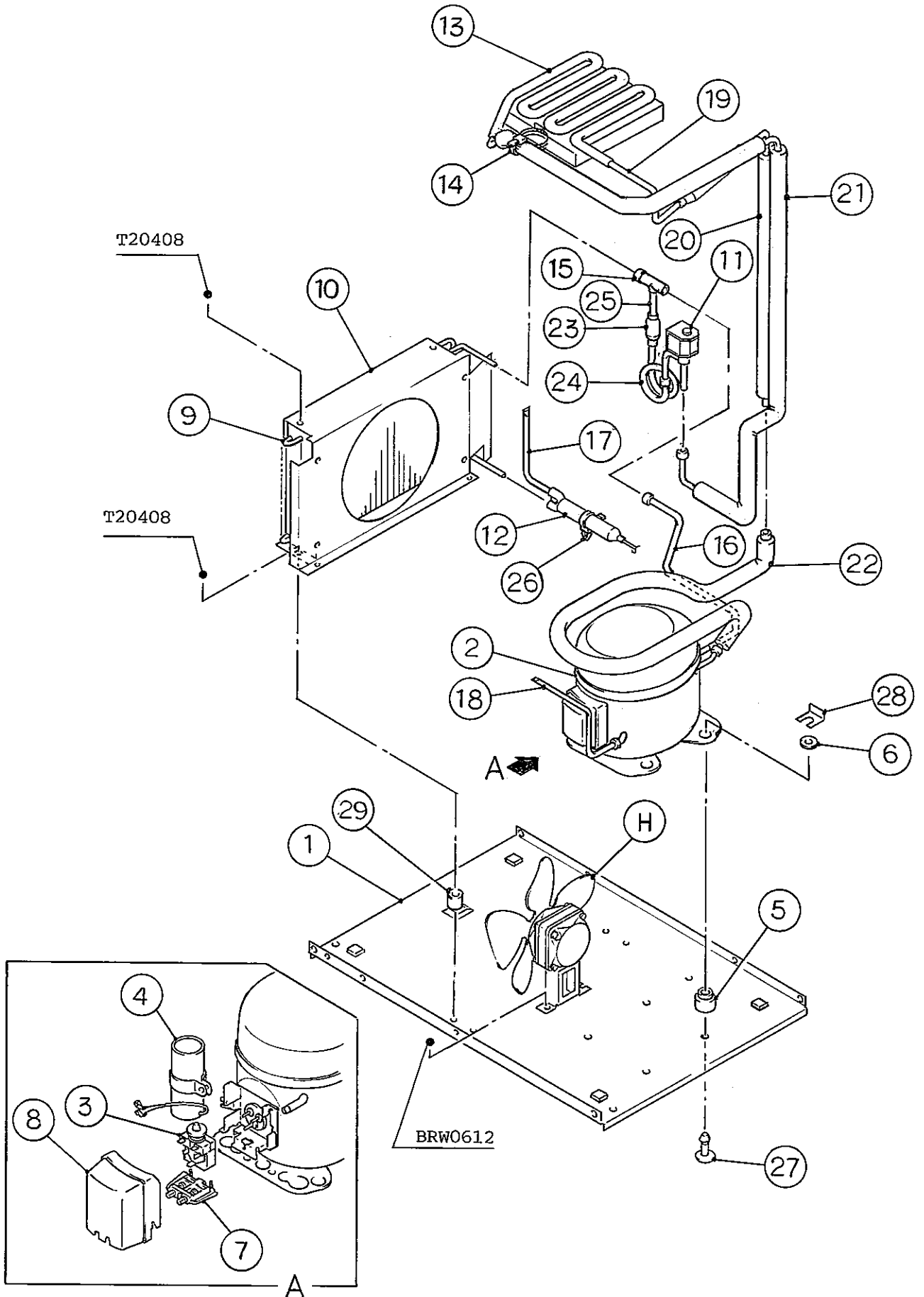
HE, GENERAL(50Hz), EXPORT(60Hz), AUSTRALIA, OCEANIA, HSP,KOREA,CHINA

MODEL : IM-45CLE-25, IM-45CLE					TITLE : A. ICE CUBER ASSY			
INDEX NO.	DESCRIPTION	MATERIAL OR MODEL NUMBER	PART NUMBER	REQ'D NUMBER				
				T-1,U-0 V-0,L-0				
B	REFRIGERATION UNIT	(IM-45CLE-25)	1H3339A01	—				
	REFRIGERATION UNIT	(IM-45CLE)	1H3339A02	1				
C	REFRIGERATION UNIT	(IM-45CLE)	-	1				
	ICE MAKING MECHANISM ASSY	(IM-45CLE-25)	1H1770A02	1				
D	ICE MAKING MECHANISM ASSY	(IM-45CLE)	-	1				
	CONTROL BOX ASSY		2H6751A01	1				
E	DOOR ASSY	-	3Y2905A01	1				
F	WATER CIRCUIT	-	3H9600A02	1				
G	LABEL LOCATION	-	3X1619A02	1				
1	UNIT FRAME	S.S, G.S	1H1760G03	1				
2	TOP PANEL	S.S	3H9606-03	1				
3	INSULATION - TOP PANEL	PE	3X1613G01	1				
4	FRONT PANEL	S.S	3X1615-01	—				
	FRONT PANEL	S.S	3Y3675G01	1				
5	SEAL (A)	PE	4H4359-01	1				
6	REAR PANEL	G.S	3X1616-01	1				
7	INSULATION	PE	4X5295-01	1				
8	FRONT FRAME	S.S	3X6086-02	1				
9	PIPE COVER	G.S	3H0172-02	1				
10	HINGE (RIGHT)	S.S	4H2583-01	1				
11	HINGE (LEFT)	S.S	4H2584-01	1				
12	DRAIN PAN	ABS	2H1440-01	1				
13	DRAIN TUBE	SI	4H2585-01	1				
14	DRAIN PIPE	ABS	4H1141-12	1				
15	SLOPE	ABS	2H1349-02	1				
16	SPRING	ZINC-PLATED WIRE	4X5639-01	1				
17	AIR FILTER	PP	208284G01	×				
18	-	-	-					
19	-	-	-					
20	FRONTO FRAME(LO)	S.S	2H4624-01	1				
21	CONNECTOR	-	P00245-01	1				

IM-45CLE-25
IM-45CLE

B. REFRIGERATION UNIT

(D-0) (D-1) (E-0) (E-1) and later
(A-0) (B-0) (B-1) (C-0)
(H-1) (J-0) (K-0) (K-1)



HE, GENERAL(50Hz), EXPORT(60Hz), AUSTRALIA, OCEANIA, HSP,KOREA

MODEL : IM-45CLE-25, IM-45CLE				TITLE : B:REFRIGERATION UNIT			
INDEX NO.	DESCRIPTION	MATERIAL OR MODEL NUMBER	PART NUMBER	REQ'D NUMBER			
				H-1 J-0 K-0	K-1 A-0 B-0	B-1 C-0 D-0	D-1 E-0
H	FAN MOTOR ASSY	(S-9023)	3X1631A01	1	1	1	1
1	BASE	G.S	2H3662G01	1	1	1	1
2	COMPRESSOR	FR8.5G	450891-01	1	1	1	1
3	STARTING RELAY	117U6015	450893-01	1	1	1	1
4	STARTING CAPACITOR	117U5015	450898-01	1	1	1	1
5	RUBBER GROMMET	-	450897-01	4	4	4	4
6	WASHER	-	450894-01	4	4	4	4
7	CORD RELIEF	103N1006	450899-01	1	1	1	1
8	COVER	103N201	450896-01	1	1	1	1
9	CONDENSER - AIR-COOLED	-	2H3635-01	1	1	1	1
10	SHROUD	G.S	2H3670-01	1	1	1	1
11	HOT GAS SOLENOID VALVE	AMS-24B10HD-1	418866-02	1	1	1	1
12	DRIER	DY-15QHD-10	458773-01	1	1	1	1
		DY-12QHD-3	445655-04				
13	EVAPORATOR	(IM-45CLE-25)	3H3941G01	1	1	1	1
	EVAPORATOR	(IM-45CLE)	3H8105G01	1	1	1	1
14	TIE	CV-100	7920-0002	REQ'D	REQ'D	REQ'D	REQ'D
15	TEE	COPPER	420041-03	1	1	1	1
16	COPPER TUBE (H)	COPPER	3X1627-01	1	1	1	1
17	PROCESS TUBE (A)	COPPER	4H4698-01	1	1	1	1
18	PROCESS TUBE (B)	COPPER	4X3379-01	1	1	1	1
19	HEAT EXCHANGER	COPPER	4X5640G01	1	1	1	1
20	INSULATION TUBE (A)	13 ID x 23 OD, L=360	7762-1323	1	1	1	1
21	COPPER TUBE (B) - HOT GAS	COPPER	3X1630G01	1	1	1	1
22	COPPER TUBE (L)	COPPER	3X2156G01	1	1	1	1
23	STRAINER	COPPER	451772-01	1	1	1	1
24	COPPER TUBE (A) - HOT GAS	COPPER	4H7545-01	1	1	1	1
25	COPPER TUBE (C) - HOT GAS	COPPER	4H7544-01	1	1	1	1
26	TIE	RT30SSF5	457167-01	1	1	1	1
27	STEEL PIN		452255-01	4	4	4	4
28	CLIP		452256-01	4	4	4	4
29	TUBE - SILICONE	SI. R, 6 ID x t1.0	4X6549-01	1	1	1	1

HE, GENERAL(50Hz), EXPORT(60Hz), AUSTRALIA, OCEANIA, HSP,KOREA

MODEL : IM-45CLE-25, IM-45CLE				TITLE : B:REFRIGERATION UNIT			
INDEX NO.	DESCRIPTION	MATERIAL OR MODEL NUMBER	PART NUMBER	REQ'D NUMBER			
				E-1	E-2 F-0 G-0	G-1	G-2 T-0
H	FAN MOTOR ASSY	(S-9023)	3X1631A01	1	1	1	1
1	BASE	G.S	2H3662G01	1	1	1	1
2	COMPRESSOR	FR8.5G	450891-01	1	1	1	1
3	STARTING RELAY	117U6015	450893-01	1	1	1	1
4	STARTING CAPACITOR	117U5015	450898-01	1	1	1	1
5	RUBBER GROMMET	-	450897-01	4	4	4	4
6	WASHER	-	450894-01	4	4	4	4
7	CORD RELIEF	103N1006	450899-01	1	1	1	1
8	COVER	103N201	450896-01	1	1	1	1
9	CONDENSER - AIR-COOLED	-	2H3635-01	1	1	1	1
10	SHROUD	G.S	2H3670-01	1	1	1	1
11	HOT GAS SOLENOID VALVE	AMS-24B10HD-1	418866-02	1	1	1	1
12	DRIER	DY-15QHD-10	458773-01	1	—		
		DY-12QHD-3	445655-04		1	1	1
13	EVAPORATOR	(IM-45CLE-25)	3H3941G01	1	1	1	1
	EVAPORATOR	(IM-45CLE)	3H8105G01	1	1	1	1
14	TIE	CV-100	7920-0002	REQ'D	REQ'D	REQ'D	REQ'D
15	TEE	COPPER	420041-03	1	1	1	1
16	COPPER TUBE (H)	COPPER	3X1627-01	1	1	1	1
17	PROCESS TUBE (A)	COPPER	4H4698-01	1	1	1	1
18	PROCESS TUBE (B)	COPPER	4X3379-01	1	1	1	1
19	HEAT EXCHANGER	COPPER	4X5640G01	1	1	1	1
20	INSULATION TUBE (A)	13 ID x 23 OD, L=360	7762-1323	1	1	1	1
21	COPPER TUBE (B) - HOT GAS	COPPER	3X1630G01	1	1	1	1
22	COPPER TUBE (L)	COPPER	3X2156G01	1	1	1	1
23	STRAINER	COPPER	451772-01	1	1	1	1
24	COPPER TUBE (A) - HOT GAS	COPPER	4H7545-01	1	1	1	1
25	COPPER TUBE (C) - HOT GAS	COPPER	4H7544-01	1	1	1	1
26	TIE	RT30SSF5	457167-01	1	1	1	1
27	STEEL PIN		452255-01	4	4	4	4
28	CLIP		452256-01	4	4	4	4
29	TUBE - SILICONE	SI. R, 6 ID x t1.0	4X6549-01	1	1	1	1

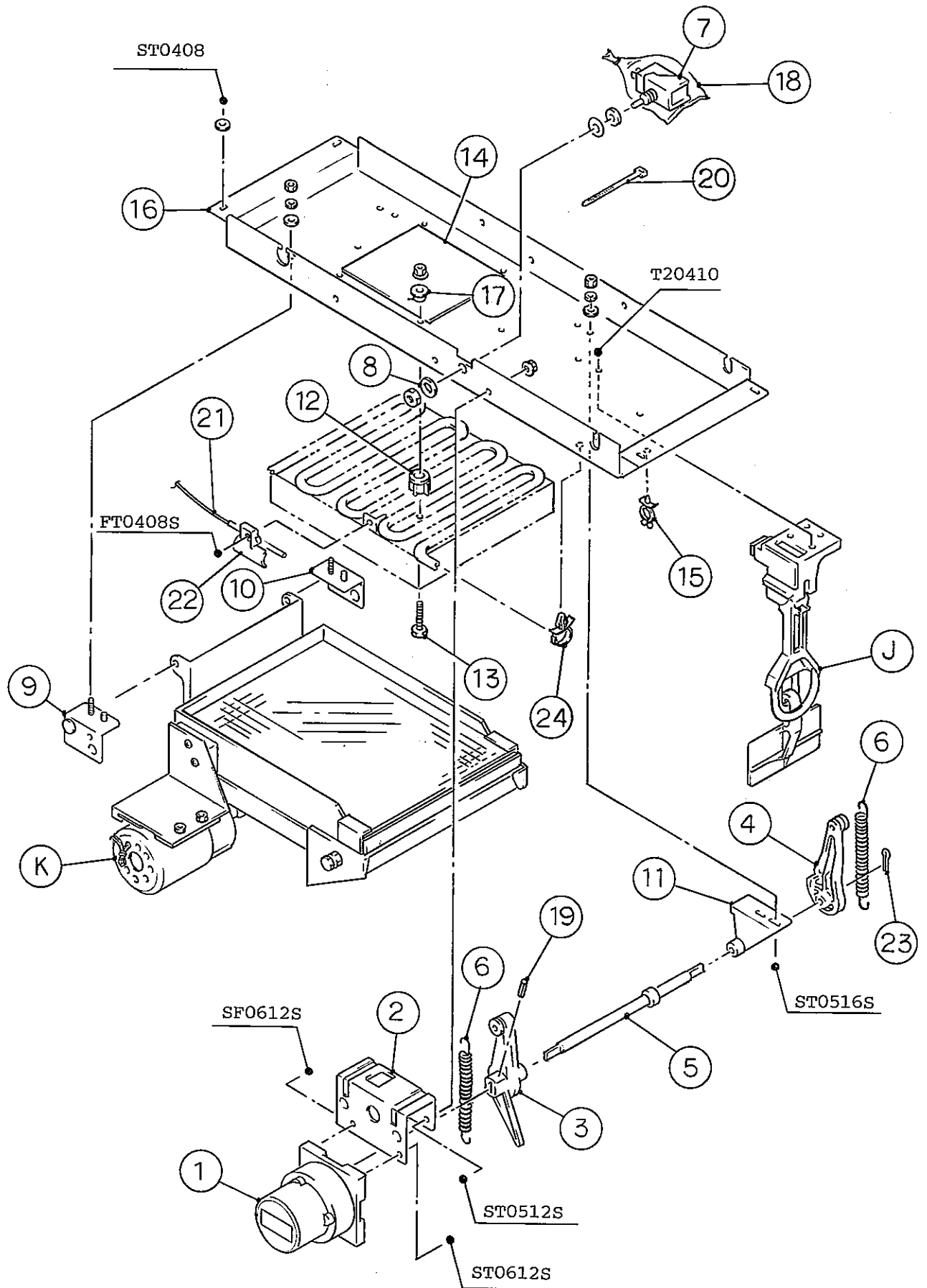
HE, GENERAL(50Hz), EXPORT(60Hz), AUSTRALIA, OCEANIA, HSP,KOREA,CHINA

MODEL : IM-45CLE-25, IM-45CLE				TITLE : B:REFRIGERATION UNIT			
INDEX NO.	DESCRIPTION	MATERIAL OR MODEL NUMBER	PART NUMBER	REQ'D NUMBER			
				T-1,U-0 V-0,L-0			
H	FAN MOTOR ASSY	(S-9023)	3X1631A01	1			
1	BASE	G.S	2H3662G01	—			
	BASE	G.S	2H9111G01	1			
2	COMPRESSOR	FR8.5G	450891-01	1			
3	STARTING RELAY	117U6015	450893-01	1			
4	STARTING CAPACITOR	117U5015	450898-01	1			
5	RUBBER GROMMET	-	450897-01	4			
6	WASHER	-	450894-01	4			
7	CORD RELIEF	103N1006	450899-01	1			
8	COVER	103N201	450896-01	1			
9	CONDENSER - AIR-COOLED	-	2H3635-01	1			
10	SHROUD	G.S	2H3670-01	—			
			2H9495M01	1			
11	HOT GAS SOLENOID VALVE	AMS-24B10HD-1	418866-02	1			
12	DRIER	DY-12QHD-3	445655-04	1			
13	EVAPORATOR	(IM-45CLE-25)	3H3941G01	1			
	EVAPORATOR	(IM-45CLE)	3H8105G01	1			
14	TIE	CV-100	7920-0002	REQ'D			
15	TEE	COPPER	420041-03	1			
16	COPPER TUBE (H)	COPPER	3X1627-01	1			
17	PROCESS TUBE (A)	COPPER	4H4698-01	1			
18	PROCESS TUBE (B)	COPPER	4X3379-01	1			
19	HEAT EXCHANGER	COPPER	4X5640G01	1			
20	INSULATION TUBE (A)	13 ID x 23 OD, L=360	7762-1323	1			
21	COPPER TUBE (B) - HOT GAS	COPPER	3X1630G01	1			
22	COPPER TUBE (L)	COPPER	3X2156G01	1			
23	STRAINER	COPPER	451772-01	1			
24	COPPER TUBE (A) - HOT GAS	COPPER	4H7545-01	1			
25	COPPER TUBE (C) - HOT GAS	COPPER	4H7544-01	1			
26	TIE	RT30SSF5	457167-01	1			
27	STEEL PIN		452255-01	4			
28	CLIP		452256-01	4			
29	TUBE - SILICONE	SI. R, 6 ID x t1.0	4X6549-01	1			

IM-45CLE-25
IM-45CLE

C. ICE MAKING MECHANISM ASSY

(D-0) (D-1) (E-0) (E-1) and later
(A-0) (B-0) (B-1) (C-0)
(H-1) (J-0) (K-0) (K-1)



HE, GENERAL(50Hz), EXPORT(60Hz), AUSTRALIA, OCEANIA, HSP,KOREA

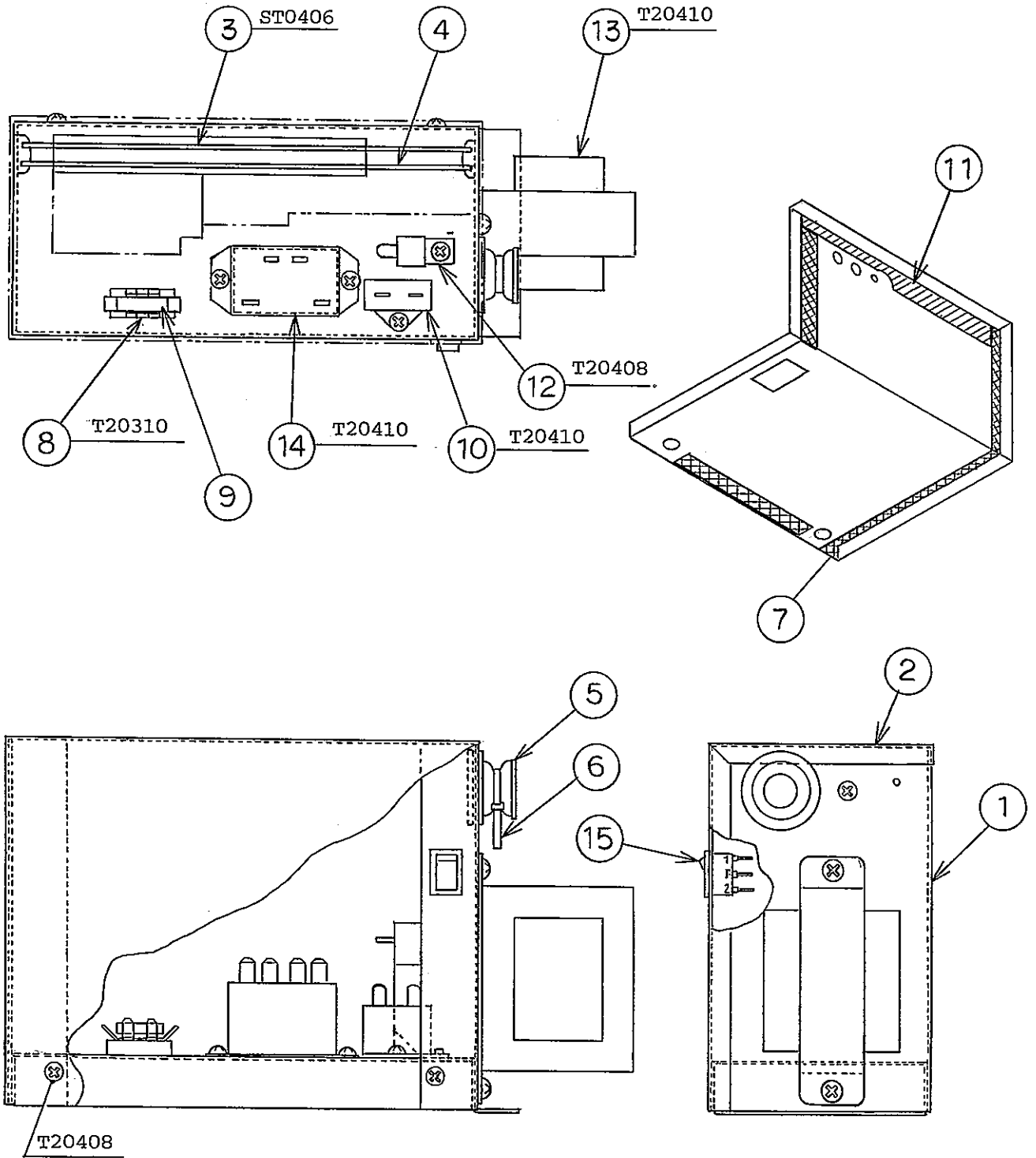
MODEL : IM-45CLE-25, IM-45CLE				TITLE : C. ICE MAKING MECHANISM ASSY			
INDEX NO.	DESCRIPTION	MATERIAL OR MODEL NUMBER	PART NUMBER	REQ'D NUMBER			
				H-1 J-0 K-0	K-1 A-0 B-0	B-1 C-0 D-0	D-1 E-0
J	BIN CONTROL SWITCH ASSY	(S-9022)	3H1537A08	1	1	1	1
K	WATER PAN ASSY	(IM-45CLE-25)	2H1158A03	1	—		
			2H1158A06		1	1	1
	WATER PAN ASSY	(IM-45CLE)	2H1158A02	1	1	1	1
1	ACTUATOR MOTOR	SR486A43-12	457880-01	1	1	1	1
2	BRACKET - ACTUATOR MOTOR	G.S	3H1388-01	1	1	1	1
3	CAM (A)	AC	2H0659-01	1	1	1	1
4	CAM (B)	AC	3H1389-01	1	1	1	1
5	CAM SHAFT	S.S	4H2589G01	1	1	1	1
6	SPRING	S.S	4H2640-01	2	2	2	2
7	TOGGLE SWITCH	VAT4-71	431977-01	1	1	1	1
8	WASHER - TOGGLE SWITCH	S.S	406196-01	1	1	1	1
9	BEARING(FRONT) - WATER PAN		4H2591G02	1	1	1	1
10	BEARING(REAR) - WATER PAN		4H2592G02	1	1	1	1
11	CAM SHAFT HOLDER		307256-01	1	1	1	1
12	SPACER	(IM-45CLE-25)	4X5342-01	4	4	4	4
	SPACER	(IM-45CLE)	4H0471-01	4	4	4	4
13	SCREW EVAPORATOR	(IM-45CLE-25)	4Y4922M02	4	4	4	4
	SCREW - EVAPORATOR MOUNTING	(IM-45CLE)	4H2593-01	4	4	4	4
14	INSULATION (D)		4X4013-02	1	1	1	1
15	CLAMP	No. 2674	427902-02	1	1	1	1
16	BRACKET - ICE MAKING MECHANISM	(IM-45CLE-25)	3X1625-01	1	1	1	1
	BRACKET - ICE MAKING MECHANISM	(IM-45CLE)	3X1647-01	1	1	1	1
17	WASHER		4H0777-01	4	4	4	4
18	SWITCH COVER	PE	408163-01	1	1	1	1
19	SPRING PIN	S.S, 3x22	712S-0322	1	1	1	1
20	TIE	CV-100	7920-0002	2	2	2	2
21	THERMISTOR	NBFC-36-AH1-2	462976-02	1	1	1	1
22	HOLDER - THERMISTOR	PE	3H9642-01	1	1	1	1
23	SPLIT PIN	S.S, 2x12	711S-0212	1	1	1	1
24	HOLDER	575	428644-02	1	1	1	1

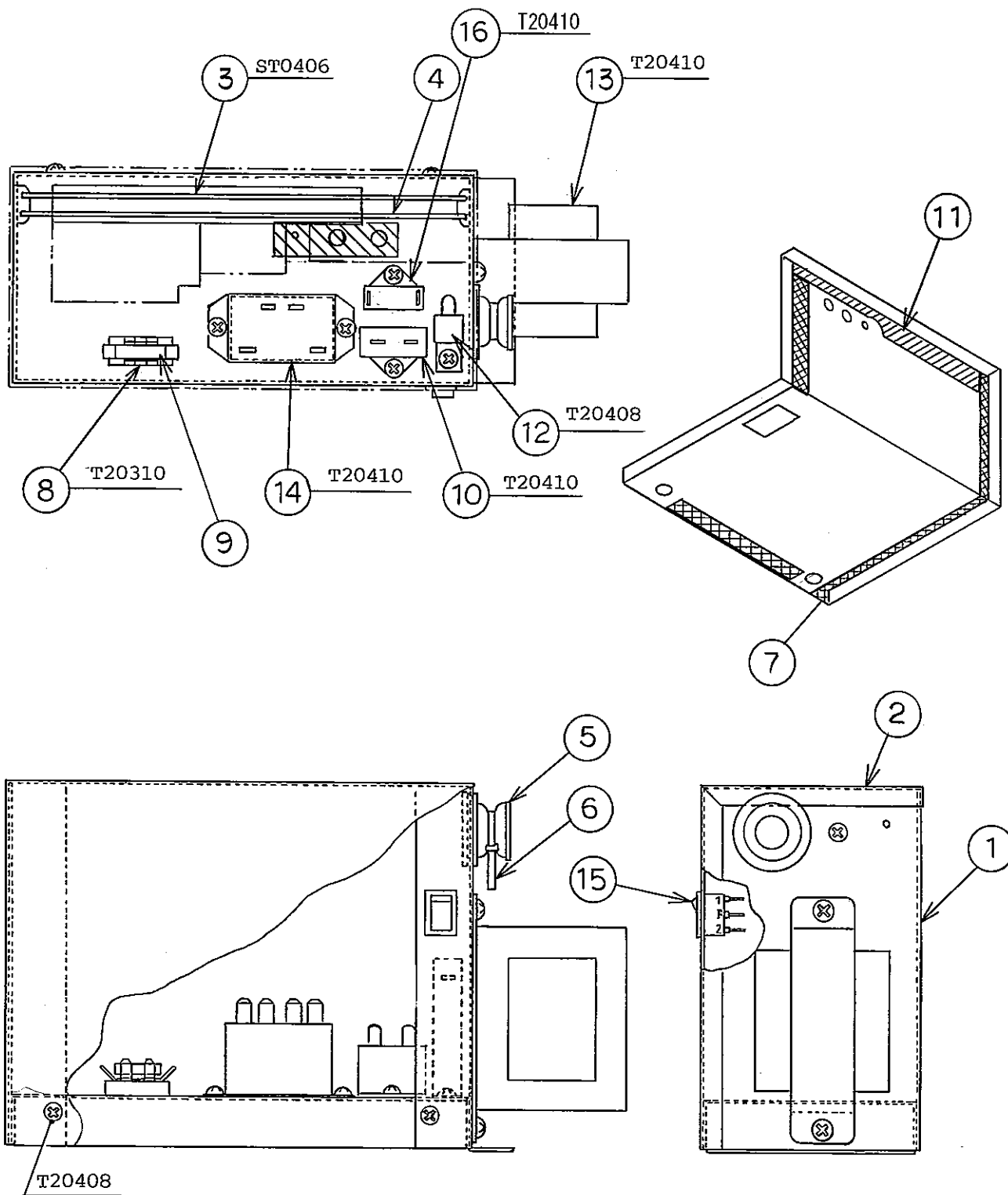
HE, GENERAL(50Hz), EXPORT(60Hz), AUSTRALIA, OCEANIA, HSP,KOREA

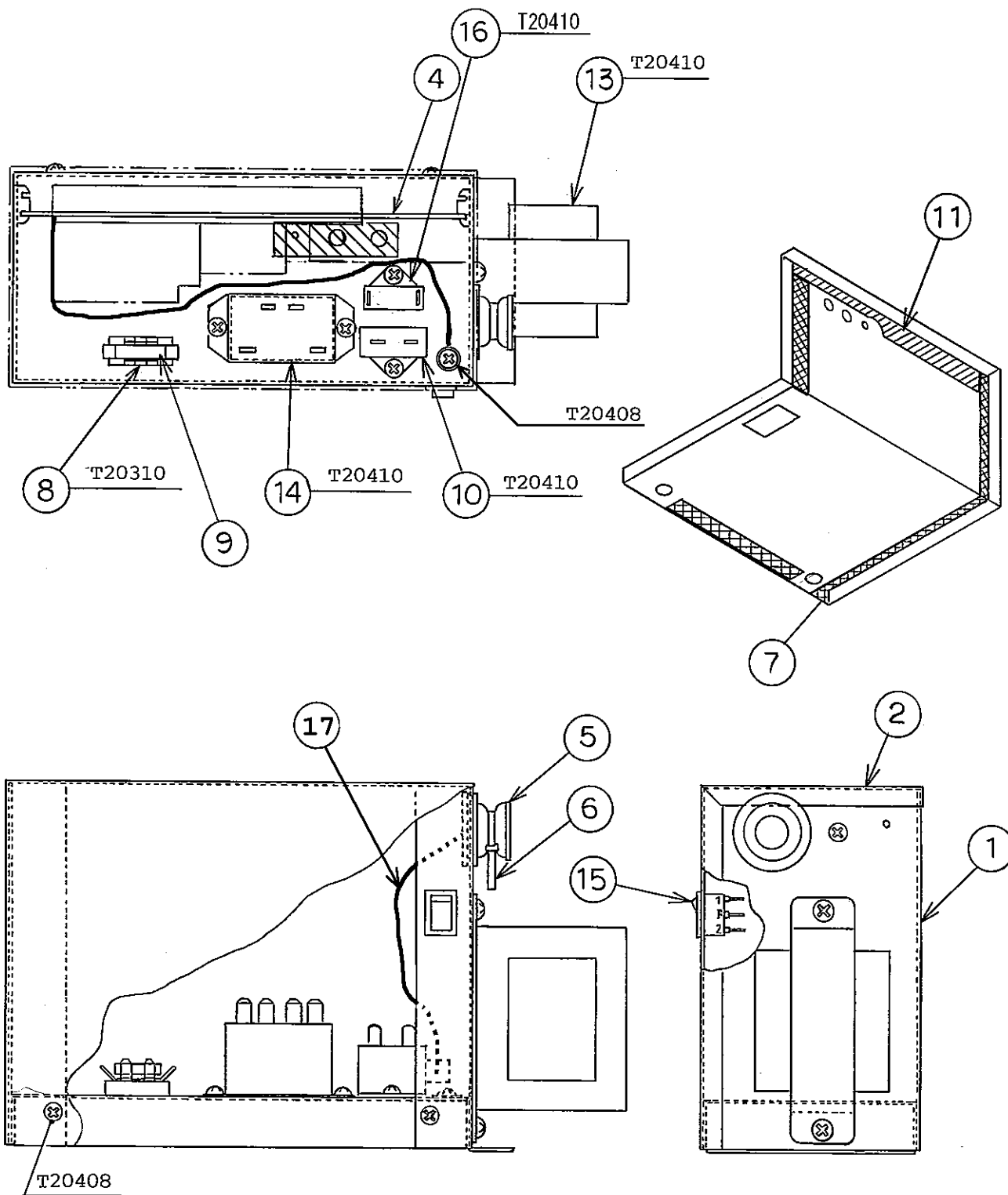
MODEL : IM-45CLE-25, IM-45CLE				TITLE : C. ICE MAKING MECHANISM ASSY			
INDEX NO.	DESCRIPTION	MATERIAL OR MODEL NUMBER	PART NUMBER	REQ'D NUMBER			
				E-1	E-2 F-0 G-0	G-1	G-2 T-0
J	BIN CONTROL SWITCH ASSY	(S-9022)	3H1537A08	1	1	1	1
K	WATER PAN ASSY	(IM-45CLE-25)	-				
	WATER PAN ASSY	(IM-45CLE)	2H1158A06	1	1	1	1
	WATER PAN ASSY	(IM-45CLE)	2H1158A02	1	1	1	1
1	ACTUATOR MOTOR	SR486A43-12	457880-01	1	1	1	1
2	BRACKET - ACTUATOR MOTOR	G.S	3H1388-01	1	1	1	1
3	CAM (A)	AC	2H0659-01	1	1	1	1
4	CAM (B)	AC	3H1389-01	1	1	1	1
5	CAM SHAFT	S.S	4H2589G01	1	1	1	1
6	SPRING	S.S	4H2640-01	2	2	2	2
7	TOGGLE SWITCH	VAT4-71	431977-01	1	1	1	1
8	WASHER - TOGGLE SWITCH	S.S	406196-01	1	1	1	1
9	BEARING(FRONT) - WATER PAN		4H2591G02	1	1	1	1
10	BEARING(REAR) - WATER PAN		4H2592G02	1	1	1	1
11	CAM SHAFT HOLDER		307256-01	1	1	1	1
12	SPACER	(IM-45CLE-25)	4X5342-01	4	4	4	4
	SPACER	(IM-45CLE)	4H0471-01	4	4	4	4
13	SCREW EVAPORATOR	(IM-45CLE-25)	4Y4922M02	4	4	4	4
	SCREW - EVAPORATOR MOUNTING	(IM-45CLE)	4H2593-01	4	4	4	4
14	INSULATION (D)		4X4013-02	1	1	1	1
15	CLAMP	No. 2674	427902-02	1	1	1	1
16	BRACKET - ICE MAKING MECHANISM	(IM-45CLE-25)	3X1625-01	1	1	1	1
	BRACKET - ICE MAKING MECHANISM	(IM-45CLE)	3X1647-01	1	1	1	1
17	WASHER		4H0777-01	4	4	4	4
18	SWITCH COVER	PE	408163-01	1	1	1	1
19	SPRING PIN	S.S, 3x22	712S-0322	1	1	1	1
20	TIE	CV-100	7920-0002	2	2	2	2
21	THERMISTOR	NBFC-36-AH1-2	462976-02	1	1	1	1
22	HOLDER - THERMISTOR	PE	3H9642-01	1	1	1	1
23	SPLIT PIN	S.S, 2x12	711S-0212	1	1	1	1
24	HOLDER	575	428644-02	1	1	1	1

HE, GENERAL(50Hz), EXPORT(60Hz), AUSTRALIA, OCEANIA, HSP,KOREA,CHINA

MODEL : IM-45CLE-25, IM-45CLE		TITLE : C. ICE MAKING MECHANISM ASSY					
INDEX NO.	DESCRIPTION	MATERIAL OR MODEL NUMBER	PART NUMBER	REQ'D NUMBER			
				T-1,U-0 V-0,L-0			
J	BIN CONTROL SWITCH ASSY	(S-9022)	3H1537A08	1			
K	WATER PAN ASSY	(IM-45CLE-25)	2H1158A06	1			
	WATER PAN ASSY	(IM-45CLE)	2H1158A02	1			
1	ACTUATOR MOTOR	SR486A43-12	457880-01	1			
2	BRACKET - ACTUATOR MOTOR	G.S	3H1388-01	1			
3	CAM (A)	AC	2H0659-01	1			
4	CAM (B)	AC	3H1389-01	1			
5	CAM SHAFT	S.S	4H2589G01	1			
6	SPRING	S.S	4H2640-01	2			
7	TOGGLE SWITCH	VAT4-71	431977-01	1			
8	WASHER - TOGGLE SWITCH	S.S	406196-01	1			
9	BEARING(FRONT) - WATER PAN		4H2591G02	1			
10	BEARING(REAR) - WATER PAN		4H2592G02	1			
11	CAM SHAFT HOLDER		307256-01	1			
12	SPACER	(IM-45CLE-25)	4X5342-01	4			
	SPACER	(IM-45CLE)	4H0471-01	4			
13	SCREW EVAPORATOR	(IM-45CLE-25)	4Y4922M02	4			
	SCREW - EVAPORATOR MOUNTING	(IM-45CLE)	4H2593-01	4			
14	INSULATION (D)		4X4013-02	1			
15	CLAMP	No. 2674	427902-02	1			
16	BRACKET - ICE MAKING MECHANISM	(IM-45CLE-25)	3X1625-01	1			
	BRACKET - ICE MAKING MECHANISM	(IM-45CLE)	3X1647-01	1			
17	WASHER		4H0777-01	4			
18	SWITCH COVER	PE	408163-01	1			
19	SPRING PIN	S.S, 3x22	712S-0322	1			
20	TIE	CV-100	7920-0002	2			
21	THERMISTOR	NBFC-36-AH1-2	462976-02	1			
22	HOLDER - THERMISTOR	PE	3H9642-01	1			
23	SPLIT PIN	S.S, 2x12	711S-0212	1			
24	HOLDER	575	428644-02	1			



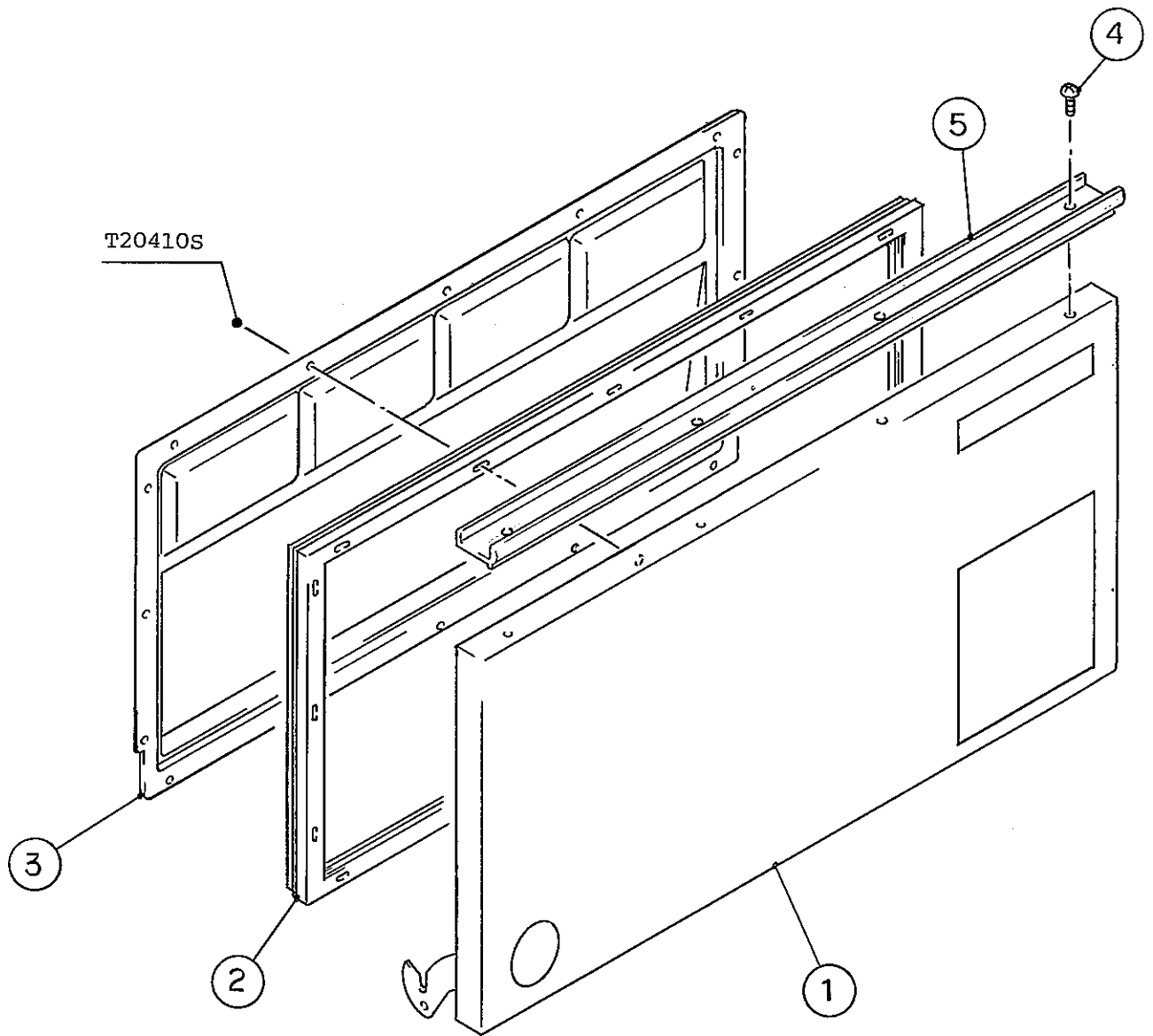


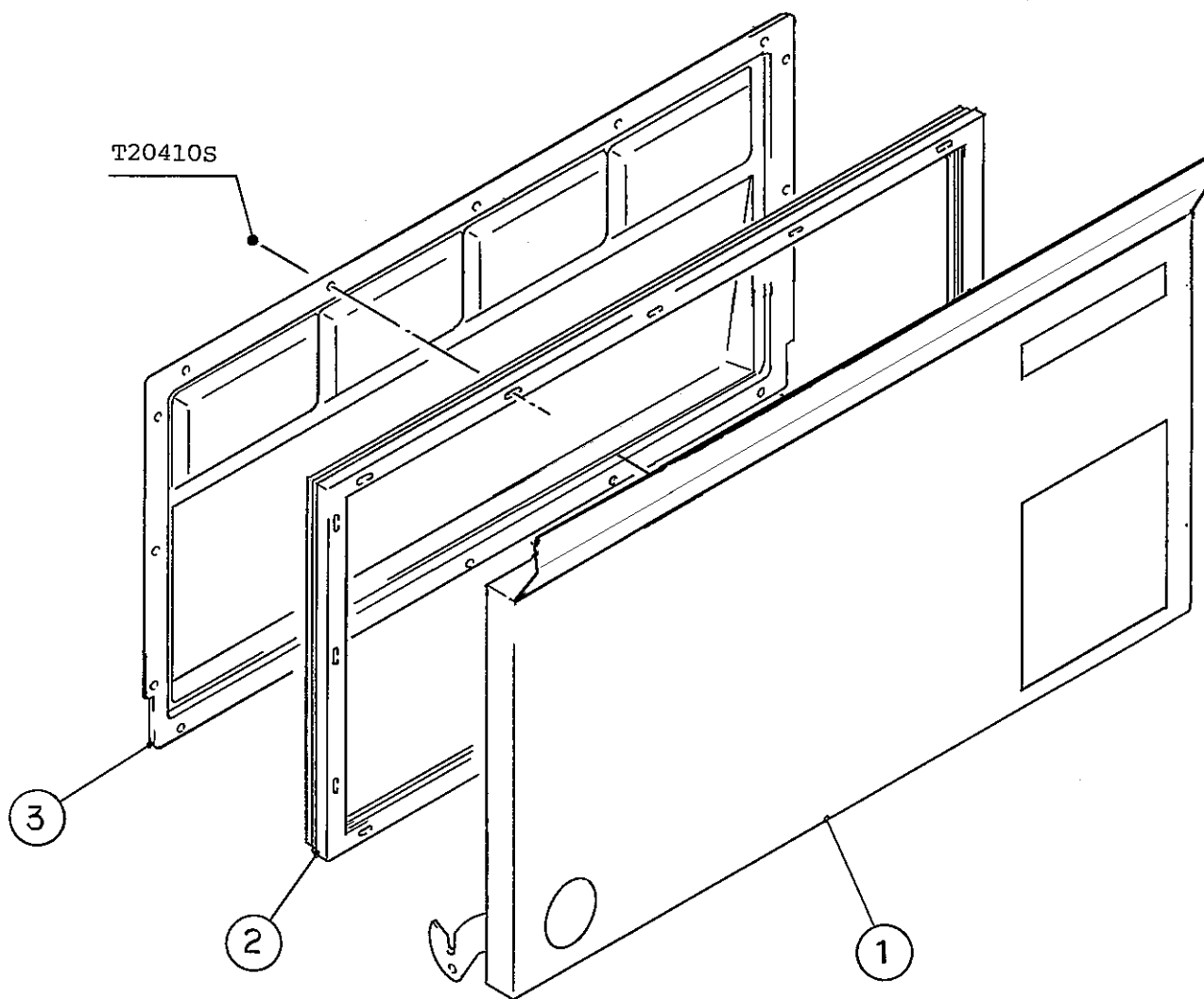


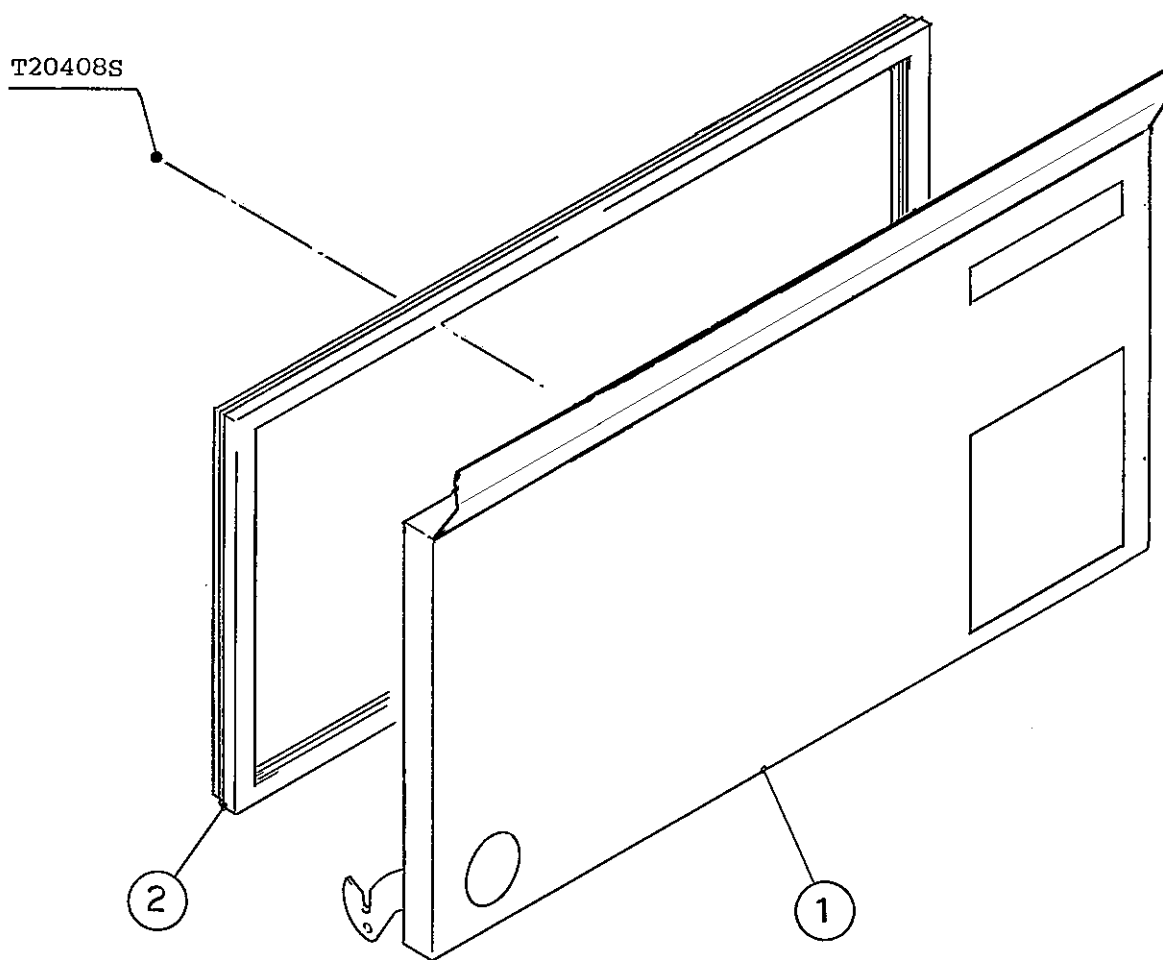
IM-45CLE-25
IM-45CLE

E. DOOR ASSY

(E-2) (F-0) (G-0) (G-1)
(D-0) (D-1) (E-0) (E-1)
(A-0) (B-0) (B-1) (C-0)
(H-1) (J-0) (K-0) (K-1)



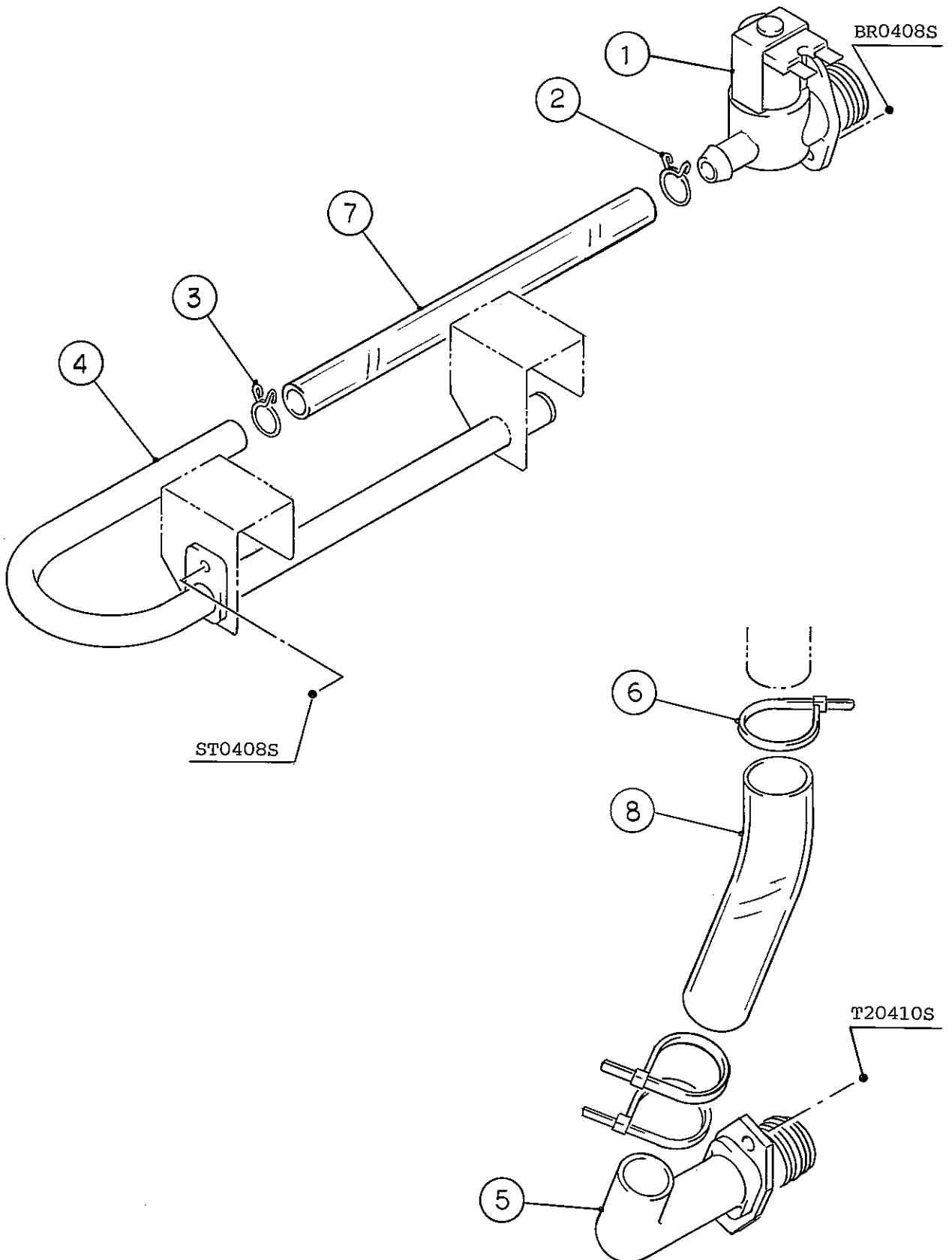




IM-45CLE-25
IM-45CLE

F. WATER CIRCUIT

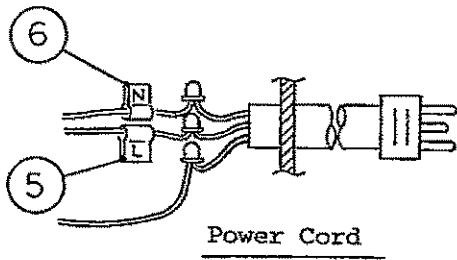
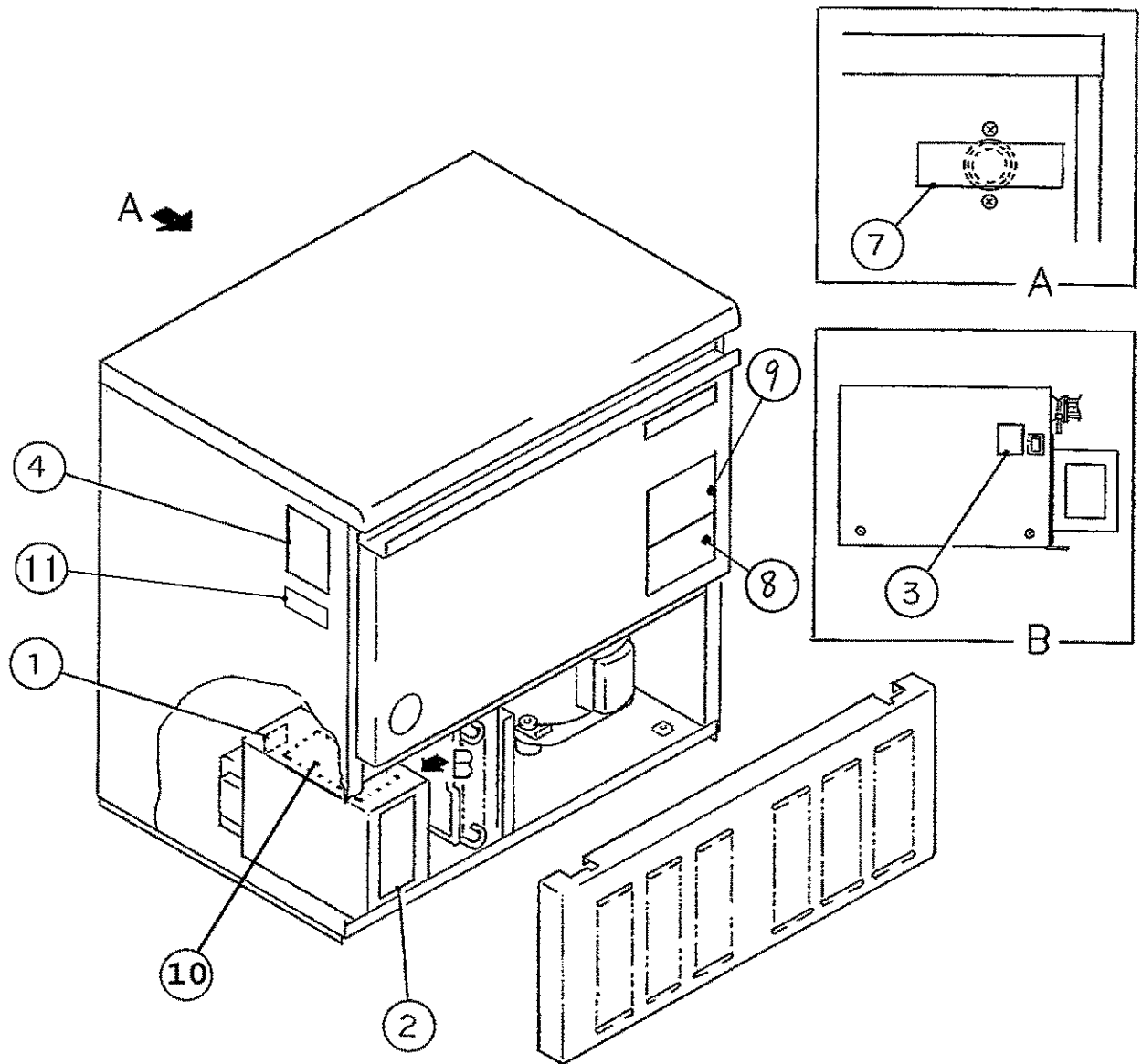
(D-0) (D-1) (E-0) (E-1) and later
(A-0) (B-0) (B-1) (C-0)
(H-1) (J-0) (K-0) (K-1)

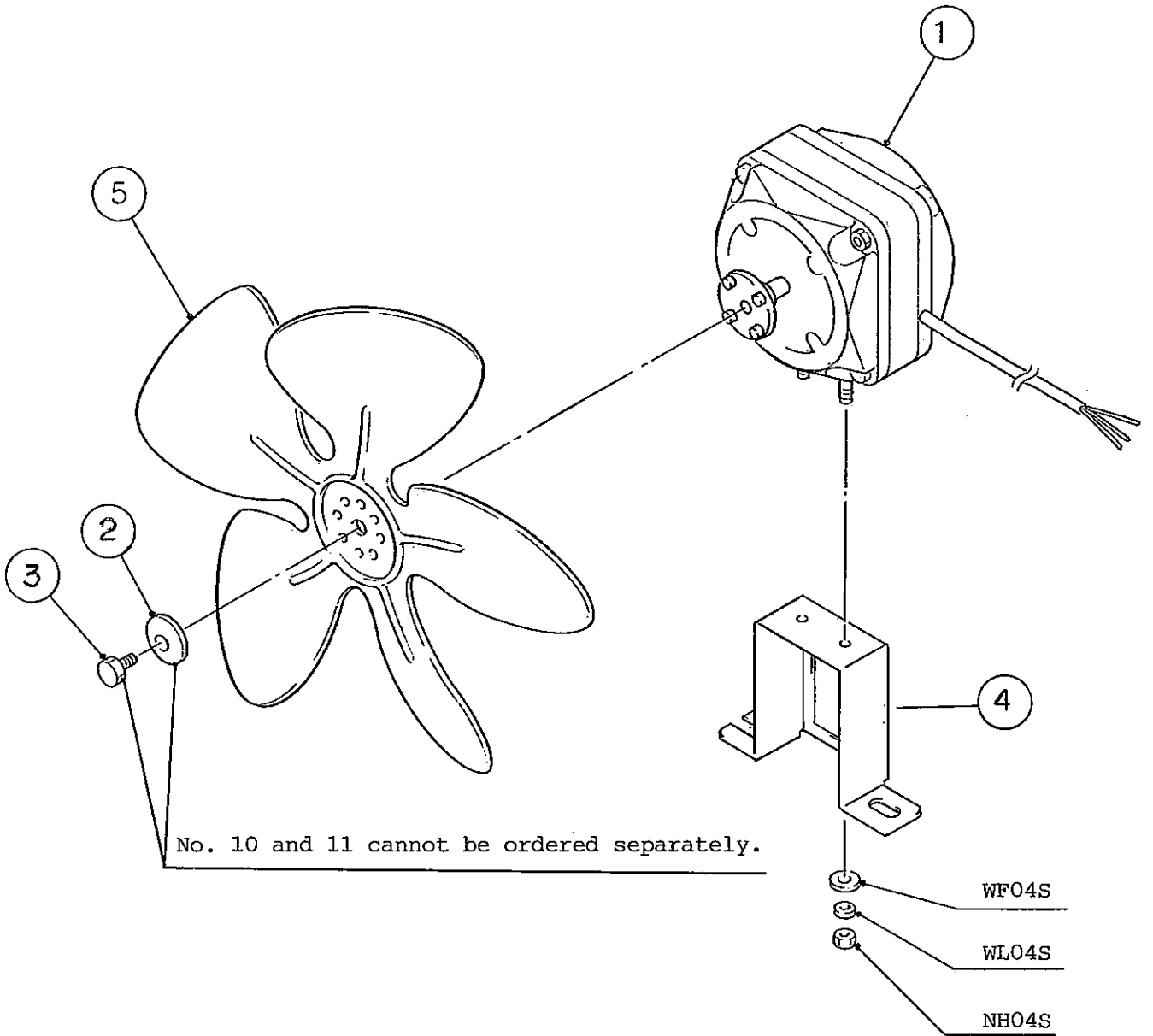


IM-45CLE-25
IM-45CLE

G. LABEL LOCATION

(D-0) (D-1) (E-0) (E-1) and later
(A-0) (B-0) (B-1) (C-0)
(H-1) (J-0) (K-0) (K-1)



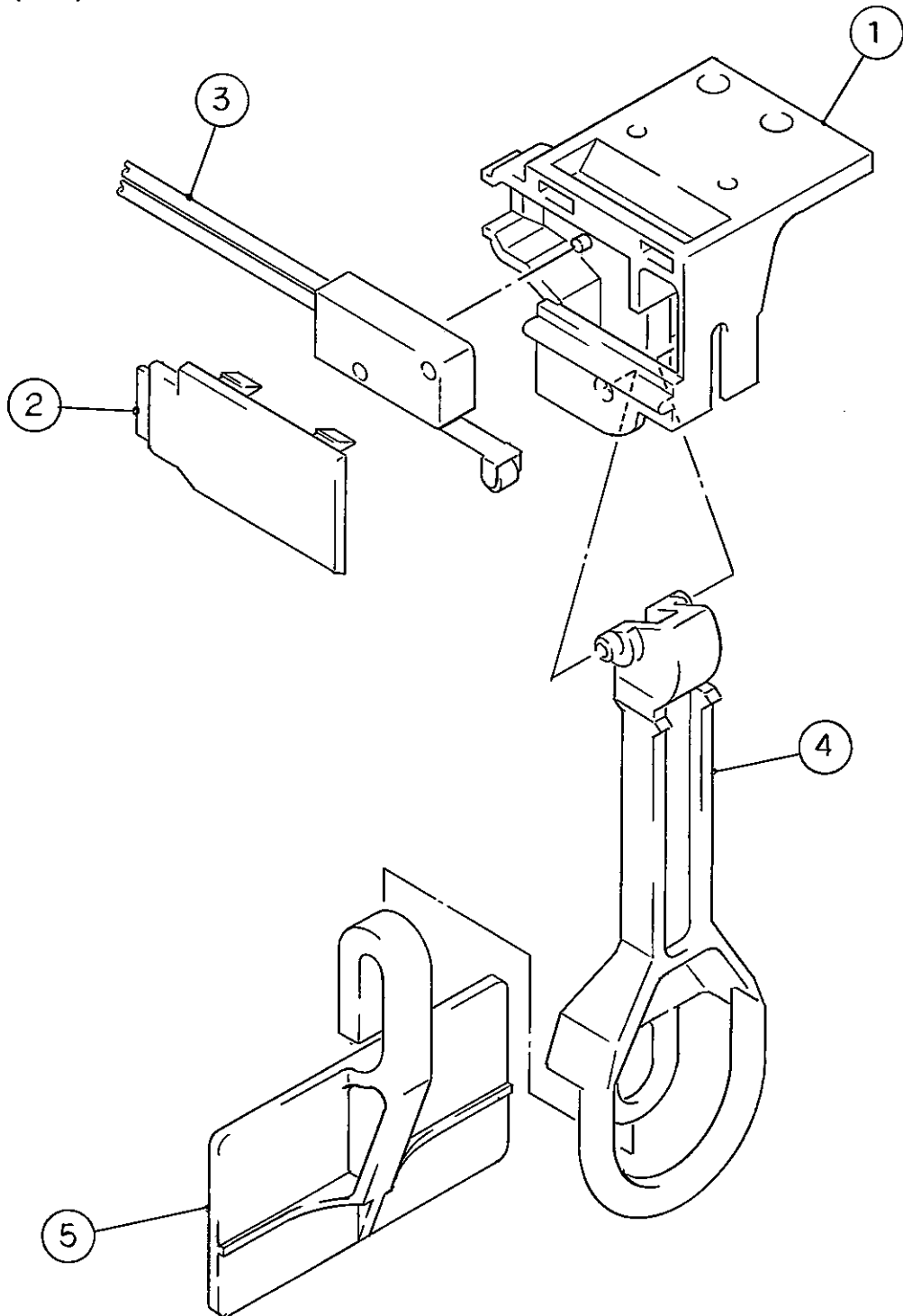


IM-45CLE-25
IM-45CLE

J. BIN CONTROL SWITCH ASSY

(D-0) (D-1) (E-0) (E-1) and later
(A-0) (B-0) (B-1) (C-0)
(H-1) (J-0) (K-0) (K-1)

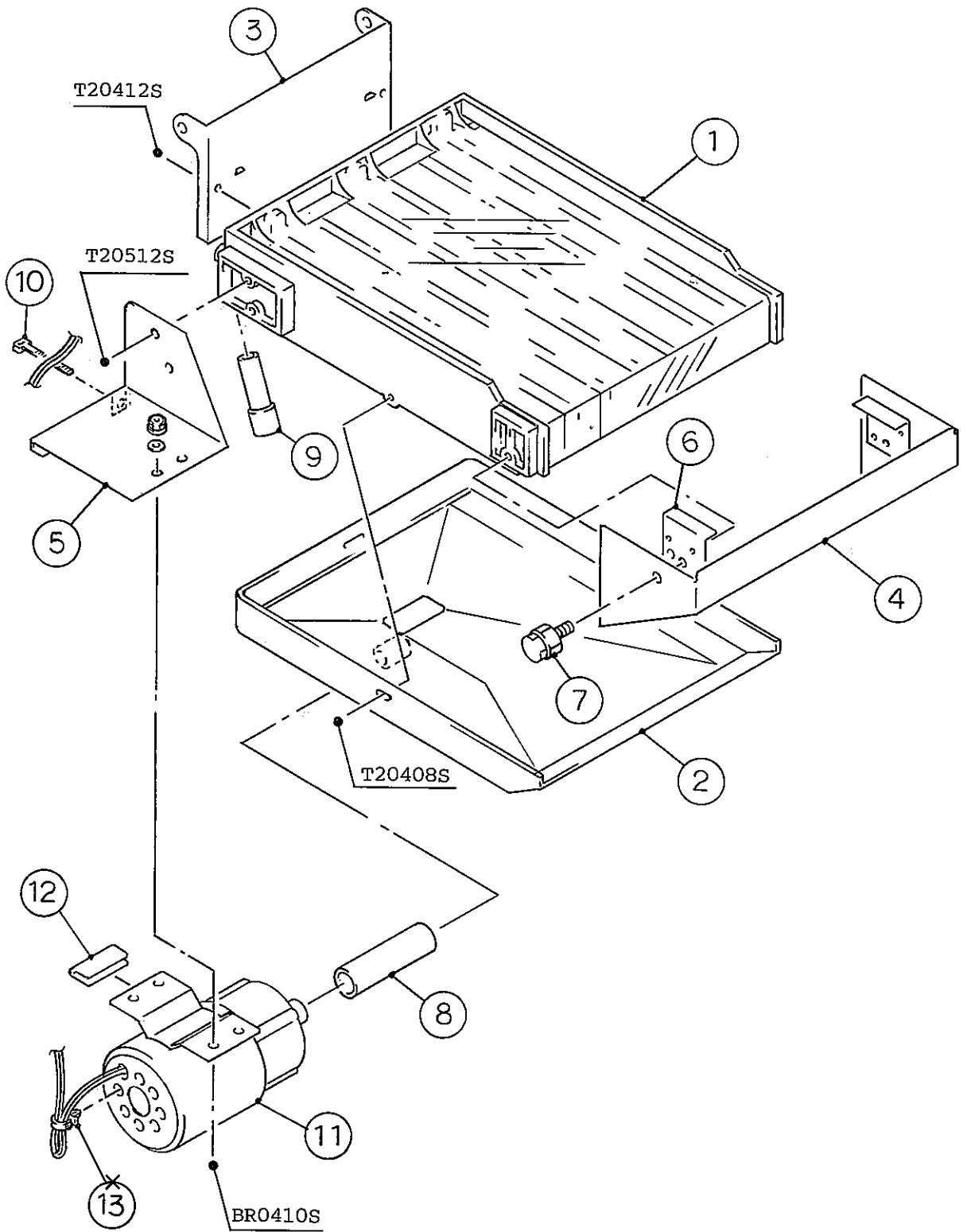
(D-0) (D-1) (E-0) (E-1) and later
(A-0) (B-0) (B-1) (C-0)
(H-1) (J-0) (K-0) (K-1)



IM-45CLE-25
IM-45CLE

K. WATER PAN ASSY

(D-0) (D-1) (E-0) (E-1) and later
(A-0) (B-0) (B-1) (C-0)
(H-1) (J-0) (K-0) (K-1)



IM-45CLE-25
IM-45CLE

L. ACCESSORIES

(D-0) (D-1) (E-0) (E-1) and later
(A-0) (B-0) (B-1) (C-0)
(H-1) (J-0) (K-0) (K-1)

