

5. Exploded Views and Parts List

5-2 Main Parts List

(S.N.A : SERVICE NOT AVAILABLE)

Level	No.	Code No.	Description	Specification	Q'ty	SA/ SNA	Remark
1-1	M036	4713-000168	LAMP-INCANDESCENT	230V,-,25W,ORG,-,-,-	2	SA	-
1-1	Z783	6011-001140	BOLT-STUD	M4,L8,NI PLT,BSW	2	SNA	-
1-1	M066	DE01-00095A	FILM-LAMP	-,PET,-,84,T0.15,114,CM-1819,-	1	SA	-
1-1	M035	DE03-00009A	MAGNETRON	2M244-M12E,1KW/2460MHZ,3.15V/4	2	SA	-
1-1	M038	DE26-00058A	TRANS H.V	SHV-906EG1,230/240V,50HZ,2425V	2	SA	-
1-1	M049	DE31-10164B	MOTOR SYNCHRONOUS	M2CK34A709-H(B),120V60	2	SA	-
1-1	M029	DE47-20017A	THERMOSTAT	PW-2N(150/60,187Z),250V/7.5A,	1	SA	-
1-1	M102	DE47-40029A	SOCKET-LAMP	250V2A,22.23,E14,BJB,-,-,-	2	SA	-
1-1	R066	DE61-50520A	BRACKET-PCB	-,SECC,T0.8,CM-1819,-,-,-	1	SNA	-
1-1	P073	DE61-50538A	BRACKET-PLATE	-,SECC,T1.0,-,-,-,-	1	SNA	-
1-1	M011	DE61-50541A	BRACKET-EARTH	-,SGCC2,T1.0,W15,L8,-,-	1	SNA	-
1-1	U003	DE61-90318A	HOLDER-LAMP	W134,SECC,-,W134,L40.5,-,L40	1	SA	-
1-1	M078	DE69-90054A	CLIP-STIRRER	5MM,PFA,CM1819/29,-,	6	SNA	-
1-1	M001	DE70-30123A	PANEL-OUTER	-,STS430,T0.6,CM-1819,-,-,-,	1	SA	-
1-1	P046	DE72-50088A	DUCT-FAN	-,ALCOAT,T0.5,CM-1819,-,-,-	1	SNA	-
1-1	P048	DE72-50089A	DUCT-MGT/R	-,SECC,T0.5,CM-1819,-,-,-	1	SNA	-
1-1	P047	DE72-50090A	DUCT-MGT/L	CM-1819,SECC,T0.5,-,-,-,-	1	SA	-
1-1	M052	DE73-90027A	FERRITE-CORE	NI-ZN,T13.8,W21.0,L28.0,BNF	2	SNA	H.V.T
1-1	M020	DE91-50093P	ASSY-MOTOR FAN	-,240V,-,CM1319/1329,COMM	1	SA	CM1329A
1-1	M020	DE91-50093R	ASSY-MOTOR FAN	-,240V,-,CM1619/1629,COMM	1	SNA	CM1629A
1-1	M020	DE91-50093T	ASSY-MOTOR FAN	-,240V,-,CM1919/1929,COMM	1	SA	CM1929A
1-2	M076	2301-001204	C-FILM,LEAD-PEF	1.50UF,-5TO+10%,450VAC,-	1	SNA	-
1-2	M039	2501-001277	C-OIL	0.80UF,2100V(CLASS P),AL CAN T	2	SA	CM1329A
1-2	M039	2501-001282	C-OIL	1.00UF,2100V(CLASS P),AL CAN T	2	SA	CM1629A
1-2	M039	2501-001284	C-OIL	1.10UF,2100V(CLASS P),AL CAN T	2	SA	CM1929A
1-2	M024	DE31-10180A	MOTOR VENTILATION	SMV-1829EA,240V50HZ,22	1	SA	-
1-2	M040	DE61-00421A	BRACKET-HVC	CM1829,SECC,T0.8,-,-,-,-	2	SA	-
1-2	M112	DE61-30189A	SUPPORT-FAN-MOUNT	-,SECC,T1.0,CM-1819,-,	1	SA	-
1-2	M041	0402-001554	HVDIODE-RECTIFIER	HV03-12T01,12000V,0.4A	2	SA	ASSY FAN MOTOR
1-1	M042	DE91-70061A	ASSY-H.V.FUSE	THV060T-0800-H,5KV/0.80A,W	2	SA	-
1-1	P074	DE92-90514A	ASSY-BACK COVER	CM-1819,CM-1829,-,-,-,-	1	SA	-
1-2	P186	DE71-60421A	COVER-BACK	-,SECC,T0.6,W481.8,L363.9,-,C	1	SNA	-
1-2	P026	DE72-50087A	DUCT-EXHAUST	-,ALCOAT,T0.6,-,-,-,-	3	SNA	-
1-1	P001	DE92-90515A	ASSY-STIRRER	CM-1819,CM-1829,-,-,-,-	2	SA	-
1-1	P061	DE92-90516B	ASSY-BRACKET FILTER	CM1819,-,-,-,-,-	1	SA	-
1-1	P017	DE92-90519A	ASSY-DUCT AIR	CM1819/29,-,-,CM1819/29,-,	1	SA	-
1-2	P018	DE47-20169A	THERMOSTAT	PW-2N(100/60,H,23.8,250V/7.5A	1	SA	-
1-2	P019	DE72-50091A	DUCT-OVEN	-,STS430,T0.4,CM-1819,-,-,-	1	SA	-
1-1	Z016	DE92-90521D	ASSY-FILTER	COMM-BONN,NEW BKT SUPPORT,-,	1	SA	-
1-2	P069	DE61-00723A	BRACKET-SUPPORT	CM1319,SECC/ALCOAT,T0.6,	1	SNA	-
1-2	M017	DE91-40105A	ASSY NOISE FILTER	SN-1829,230V/50HZ,-,-,	1	SA	-
1-3	M019	3601-000448	FUSE-CARTRIDGE	250V,10A,SLOW-BLOW,CERAMI	2	SA	-
1-3	Z781	3601-001126	FUSE-CARTRIDGE	250V,1.6A,FAST-ACTING,CER	1	SA	-

5. Exploded Views and Parts List

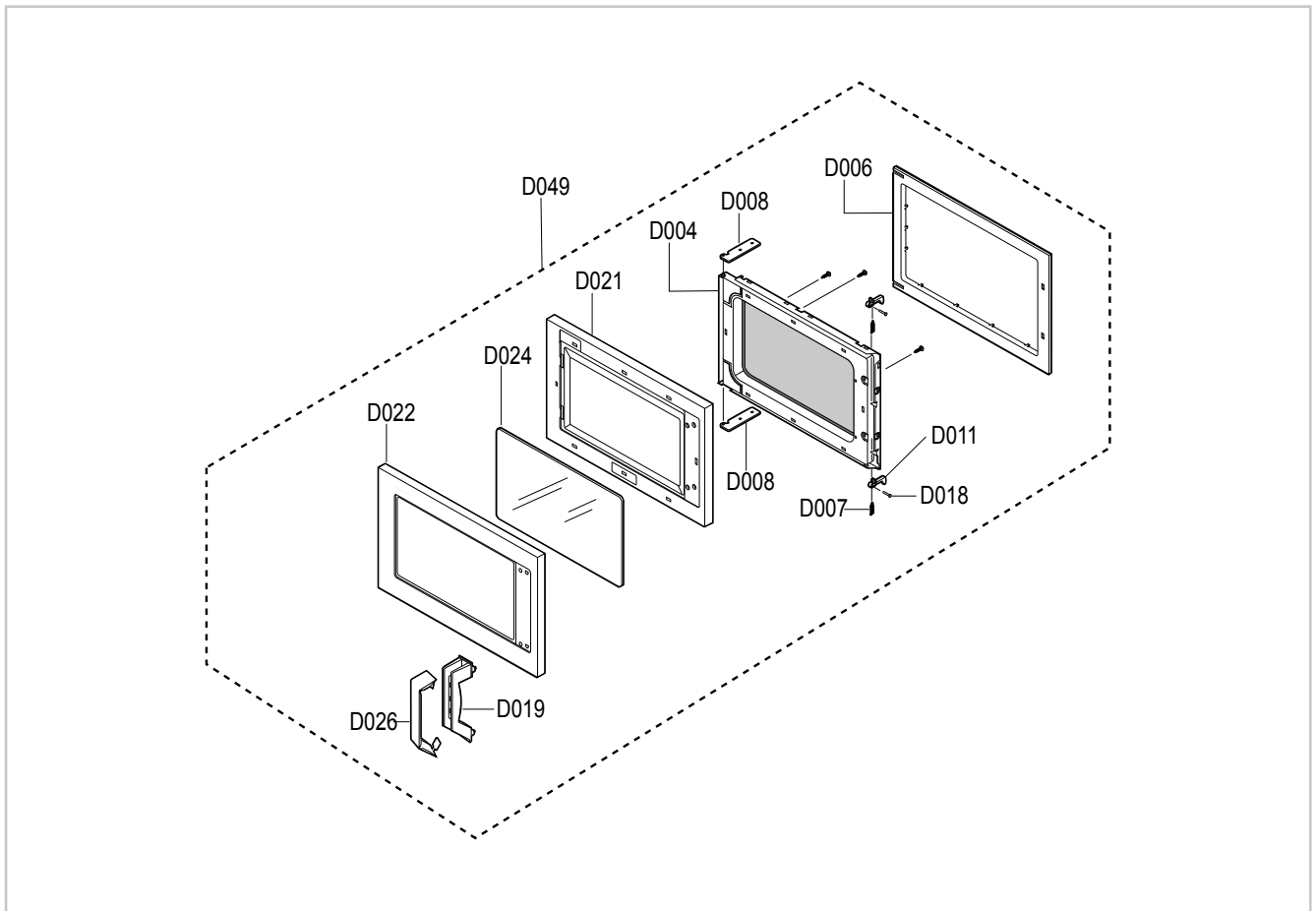
5-2 Main Parts List

(S.N.A : SERVICE NOT AVAILABLE)

Level	No.	Code No.	Description	Specification	Q'ty	SA/ SNA	Remark
1-1	M129	DE92-90533A	ASSY-LAMP HOLDER	CM1819/CM1829,-,-,-,-,-	1	SA	-
1-2	M065	DE63-90190B	CUSHION-LAMP	CM1819/29,PUT-FOAM,T7.0,W10	1	SNA	-
1-2	M086	DE71-60422A	COVER-LAMP	-,STS430,T0.6,CM-1819,-,-,-,-,-	1	SNA	-
1-1	M155	DE93-10106C	ASSY BASE PLATE	CM1819,SECC	1	SA	-
1-2	M048	DE80-10113C	BASE-PLATE	CM1819,SECC1,-,-,-,-,-	1	SNA	-
1-1	B018	DE93-20097E	ASSY BODY LATCH	CM1819/1829,EUROPE	1	SA	-
1-2	B002	3405-001032	SWITCH-MICRO	125/250VAC,16A,200GF,SPDT	2	SA	-
1-2	B001	3405-001034	SWITCH-MICRO	125/250VAC,16A,200GF,SPST-N	1	SA	-
1-2	B001	3405-001055	SWITCH-MICRO	125/250VAC,16A,200GF,SPST-N	2	SA	-
1-2	B005	DE61-00066A	SPRING-Q	CM1819/1829,MSWR,PI0.8,-,-,-,-,-	1	SA	-
1-2	B006	DE66-40062A	LATCH-BODY	,-,-,-,-,-,-,-	1	SA	-
1-2	B012	DE66-90107A	LEVER-SWITCH(U)	PBT,CM-1819,-,-,-,-,-	1	SA	-
1-2	B013	DE66-90108A	LEVER-SWITCH(L)	PBT,CM-1819,-,-,-,-,-	1	SA	-
1-1	W002	DE96-00503A	ASSY-WIRE HARNESS A	CM1929,230V 50HZ VI	1	SA	-
1-1	M015	DE96-00639B	ASSY POWER CORD	CEE(F),CEE,250V/15A,2200	1	SA	-
1-1	T002	DE97-00319A	ASSY-TRAY CERAMIC	CM1829,-,-,-,-,-	1	SA	-
1-2	T108	DE61-00170A	FOOT-TRAY	CM1049,URETHANE,-,WHT,-,-,-,-	2	SNA	-
1-2	T002	DE74-20116A	TRAY-CERAMIC	CERAMIC,T3.0,-,-,-,-	1	SNA	-
1-1	P075	DE97-00562A	ASSY-COVER PANEL	CM1019,PP+SGL,-,-,-,-	1	SA	-
1-2	M087	DE63-00315A	COVER-STIRRER	CM1019,PP,-,-,-,-,-, NATUAL	1	SNA	-
1-2	M051	DE63-00324A	COVER-CEILING	CM1019,SGL(SILCON GLASS LA	1	SNA	-

5. Exploded Views and Parts List

5-3 Door Parts List

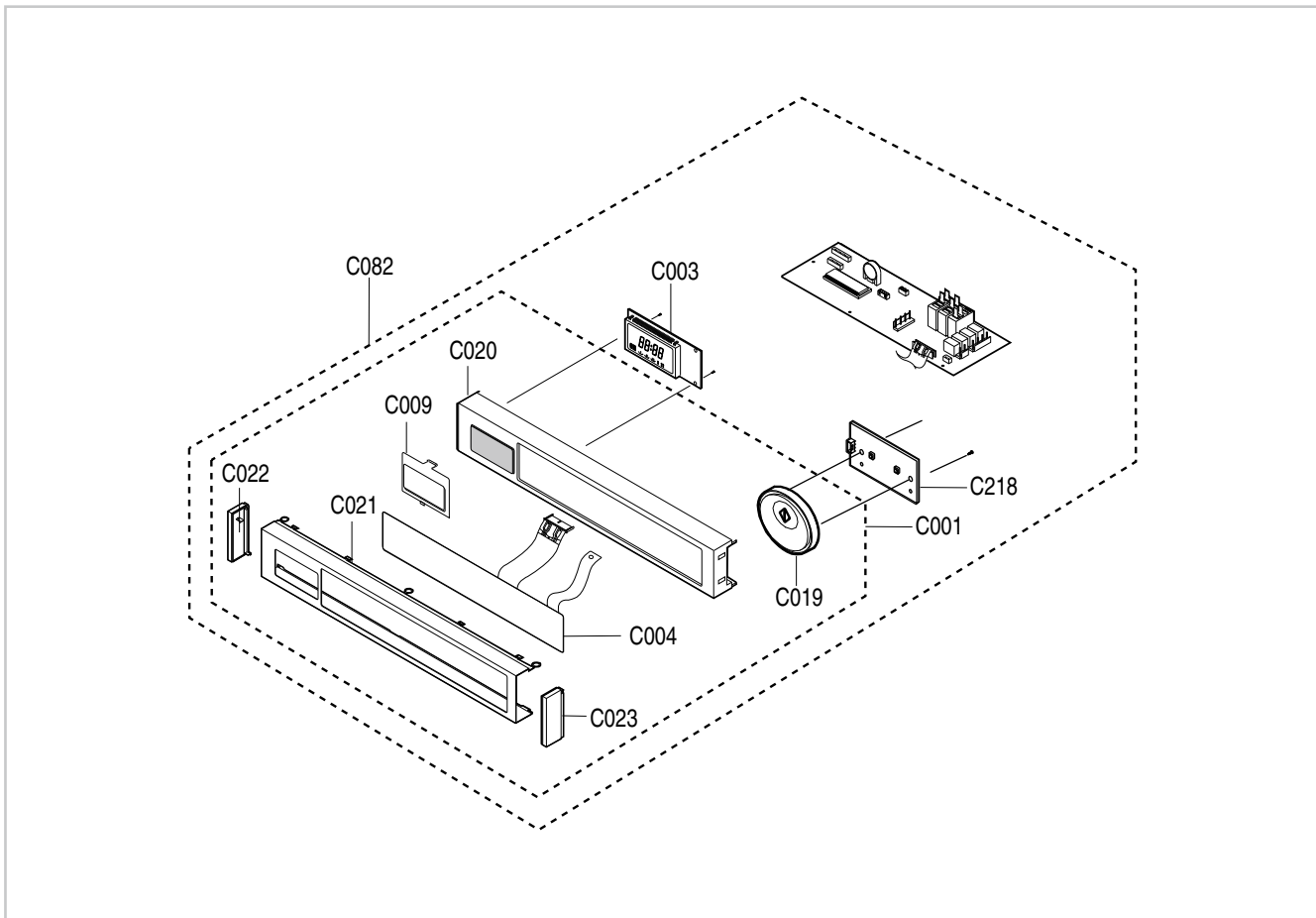


(S.N.A : SERVICE NOT AVAILABLE)

Level	No.	Code No.	Description	Specification	Q'ty	SA/SNA	Remark
1-1	D049	DE92-40195V	ASSY DOOR	CM1329,STS,1300W	1	SA	CM1329A
1-1	D049	DE92-40195Z	ASSY DOOR	CM1629,STS,1600W	1	SA	CM1629A
1-1	D049	DE94-01286D	ASSY DOOR	CM1929,STS,1900W	1	SA	CM1929A
1-2	D018	DE60-60080A	PIN-KEY	A,M3.95,L21,STS304,-,CM-1819,-	2	SA	DOOR-E
1-2	D007	DE61-70144A	SPRING-KEY	-,HSWR,PI1.0,-,OD6.5,L32.8,21	2	SA	-
1-2	D008	DE61-80138A	HINGE	-,SHV-945EG1,KEC,T3.0,W24.5,L2	2	SNA	-
1-2	D019	DE64-20123A	HANDLE	CM-1819,ZN-DICASTING,-,-,-,-,C	1	SA	-
1-2	D006	DE64-40298A	DOOR-C	-,PP,-,-,-,-,-	1	SA	-
1-2	D021	DE64-90145A	DECORATION-DOOR	-,ABS,CM-1819,-,-,-,CM-1	1	SA	-
1-2	D022	DE64-90146A	DECORATION-COV/DOOR	-,STS,CM-1819,-,-,-	1	SA	-
1-2	D024	DE67-20174F	SCREEN-DOOR(B)	CM1419,GLASS,T3.2,W198.5,	1	SA	CM1329A
1-2	D024	DE67-20174J	SCREEN-DOOR(B)	CM1629,GLASS,3.2,198.5,36	1	SA	CM1629A
1-2	D024	DE67-20174N	SCREEN-DOOR(B)	CM1929,GLASS,3.2,198.5,36	1	SA	CM1929A
1-2	D026	DE71-60433A	COVER-HANDLE	-,STS430,T0.5,CM-1819,-,-,-	1	SA	-
1-2	D004	DE92-50132B	ASSY DOOR-E	CM-1819,COATING,BLK	1	SA	-
1-2	D011	DE64-40296B	DOOR-KEY	CMO COMMERCIAL,CR3C + ZINC DIE	2	SA	-

5. Exploded Views and Parts List

5-4 Control Parts List



(S.N.A : SERVICE NOT AVAILABLE)

Level	No.	Code No.	Description	Specification	Q'ty	SA/SNA	Remark
1-1	C082	DE93-30442R	ASSY CONTROL-BOX	-,CM1329,-,COMMERCIAL	1	SA	CM1329A
1-1	C082	DE93-30442S	ASSY CONTROL-BOX	-,CM1629,-,COMMERCIAL	1	SA	CM1629A
1-1	C082	DE93-30442T	ASSY CONTROL-BOX	-,CM1929,-,COMMERCIAL	1	SA	CM1929A
1-2	C001	DE93-30529N	ASSY CONTROL-PANEL	-,CM1329,-,COMMERCIAL	1	SA	-
1-3	C004	DE34-00158A	SWITCH MEMBRANE	CM1929/XEU,COMMERCIAL,-,	1	SA	-
1-3	C009	DE67-40161A	WINDOW-DISPLAY	-,RESIN-PMMA,82555,CM-181	1	SA	-
1-3	C020	DE70-30125A	PANEL-BASE	-,RESIN-ABS,TC,CM-1829,-,-,-,	1	SNA	-
1-3	C021	DE71-60426A	COVER-PANEL	-,STS430,T0.5,TC,CM-1829,-,-	1	SA	-
1-3	C022	DE71-60428B	COVER-PANEL(L/L)	CM1019,ABS,-,-,-,-,CM	1	SA	-
1-3	C023	DE71-60429B	COVER-PANEL(L/R)	CM1019,ABS,-,-,-,-,-,CM	1	SA	-
1-3	C019	DE66-20212A	BUTTON-START	-,,-,NI,CR-PLATING,-,-,CM-18	1	SA	-
1-2	C218	DE61-00808A	GUIDE-START-BUTTON	CM1019,PP(TB53),-,-,-	1	SNA	START / STOP PCB
1-2	C003	RCS-D2CM-11	ASSY PCB PARTS	CM1229 , 230V50HZ	1	SA	CM1329A
1-2	C003	RCS-D2CM-03	ASSY PCB PARTS	CM1429 , 230V50HZ	1	SA	CM1629A
1-2	C003	RCS-D2CM-01	ASSY PCB PARTS	CM1829 , 230V50HZ	1	SA	CM1929A

5. Exploded Views and Parts List

5-5 Standard Parts List

(S.N.A : SERVICE NOT AVAILABLE)

(CM1319)

Level	Code No.	Description	Specification	Q'ty	SA/ SNA	Remark
1-1	6002-000630	SCREW-TAPPING	PH,+2S,M3,L8,ZPC(YEL),SWR	1	SNA	MAIN PCB
1-1	6002-001325	SCREW-TAPPING	TH,TORX,2S,M4,L12,ZPC(YEL)	1	SA	-
1-1	6002-001326	SCREW-TAPPING	OH,+1,M4,L8,NI PLT	3	SNA	OUT PANEL SIDE
1-1	6006-001170	SCREW-ASSY TAPP	WS,TH,+M4,L10,ZPC(YEL)	3	SNA	S/MEM
1-1	6006-001176	SCREW-ASSY TAPT	WT,PH,+M4,L8,ZPC(YEL)	6	SNA	DUCT-MGT-R
1-1	6011-001140	BOLT-STUD	M4,L8,NI PLT,BSW	1	SNA	-
1-1	DE60-10080A	SCREW-WASHER	-,-,-,M5,L12,-,2S,-,-	1	SA	HVT
1-1	DE60-10082I	SCREW-A	-,-,-,2S-4X10,FEFZY,-,-,-,-	3	SNA	O/P
1-1	DE60-10199A	SCREW-WASHER	-,MSWR18C,4,L10,TH(WASHER),	8	SA	SUP-FAN
1-1	DE60-20014A	BOLT-FLANGE	M5,L10,MSWR3,FEFZY,-,-,-,-,-	2	SA	HINGE UPPER
1-1	DE60-30015A	NUT-FLANGE	M5,P0.8,MSWR10,FEFZY,-,-,-,-,-	1	SA	MGT
1-2	6006-001176	SCREW-ASSY TAPT	WT,PH,+M4,L8,ZPC(YEL)	1	SNA	-
1-2	DE60-10082I	SCREW-A	-,-,-,2S-4X10,FEFZY,-,-,-,-	2	SNA	VENT-MOTOR
1-2	6006-001170	SCREW-ASSY TAPP	WS,TH,+M4,L10,ZPC(YEL)	1	SNA	HANDLE
1-2	6001-000033	SCREW-MACHINE	TH,+M4,L10,-,STS304,-	1	SNA	-
1-2	6002-000239	SCREW-TAPPING	TH,+2S,M4,L8,ZPC(YEL),SM2	1	SNA	DECORATION
1-2	DE60-10045A	SCREW-TAP PH	-,-,FEFZY,-,PH,M3,-,L6,-,-	1	SA	TCO-DUCT
1-2	6002-000630	SCREW-TAPPING	PH,+2S,M3,L8,ZPC(YEL),SWR	1	SNA	-
1-2	6002-000630	SCREW-TAPPING	PH,+2S,M3,L8,ZPC(YEL),SWR	1	SNA	PCB
1-2	6002-001237	SCREW-TAPPING	PWH,+2,M3,L12,ZPC(YEL),SW	1	SNA	GUIDE START BUTTON

(S.N.A : SERVICE NOT AVAILABLE)

(CM1619)

Level	Code No.	Description	Specification	Q'ty	SA/ SNA	Remark
1-1	6002-000630	SCREW-TAPPING	PH,+2S,M3,L8,ZPC(YEL),SWR	4	SA	MAIN PCB
1-1	6002-001325	SCREW-TAPPING	TH,TORX,2S,M4,L12,ZPC(YEL)	2	SA	-
1-1	6002-001326	SCREW-TAPPING	OH,+1,M4,L8,NI PLT	10	SNA	BASE,COVER-LAMP,OUT PANEL SIDE
1-1	6006-001170	SCREW-ASSY TAPP	WS,TH,+M4,L10,ZPC(YEL)	3	SA	BKT-EARTH,P/C EARTH,S.MEM.EARTH
1-1	6006-001176	SCREW-ASSY TAPT	WT,PH,+M4,L8,ZPC(YEL)	8	SNA	BKT-HIN-L,BKT-HIN-U,BKT-MOTOR,DUCT-FAN,D
1-1	6011-001140	BOLT-STUD	M4,L8,NI PLT,BSW	2	SNA	-
1-1	DE60-10080A	SCREW-WASHER	-,-,-,M5,L12,-,2S,-,-	8	SA	HVT
1-1	DE60-10082I	SCREW-A	-,-,-,2S-4X10,FEFZY,-,-,-,-	10	SA	BODY-LATCH,C-PANEL,O/P
1-1	DE60-10199A	SCREW-WASHER	-,MSWR18C,4,L10,TH(WASHER),	17	SA	BACK COVER,BKT-PCB,BRACKET HOLDER LAMP,D
1-1	DE60-20014A	BOLT-FLANGE	M5,L10,MSWR3,FEFZY,-,-,-,-,-	5	SA	HINGE DOOR LOWER,HINGE UPPER
1-1	DE60-30015A	NUT-FLANGE	M5,P0.8,MSWR10,FEFZY,-,-,-,-,-	8	SA	MGT
1-2	6006-001176	SCREW-ASSY TAPT	WT,PH,+M4,L8,ZPC(YEL)	4	SNA	HVD,HVC
1-2	DE60-10082I	SCREW-A	-,-,-,2S-4X10,FEFZY,-,-,-,-	5	SA	C-FILM,VENT-MOTOR
1-2	6006-001170	SCREW-ASSY TAPP	WS,TH,+M4,L10,ZPC(YEL)	2	SA	-
1-2	6002-000239	SCREW-TAPPING	TH,+2S,M4,L8,ZPC(YEL),SM2	3	SNA	DECORATION
1-2	6001-000033	SCREW-MACHINE	TH,+M4,L10,-,STS304,-	2	SNA	-
1-2	DE60-10045A	SCREW-TAP PH	-,-,FEFZY,-,PH,M3,-,L6,-,-	1	SA	TCO-DUCT
1-2	6002-000630	SCREW-TAPPING	PH,+2S,M3,L8,ZPC(YEL),SWR	2	SA	-
1-2	6002-000630	SCREW-TAPPING	PH,+2S,M3,L8,ZPC(YEL),SWR	2	SA	PCB
1-2	6002-001237	SCREW-TAPPING	PWH,+2,M3,L12,ZPC(YEL),SW	2	SNA	GUIDE START BUTTON

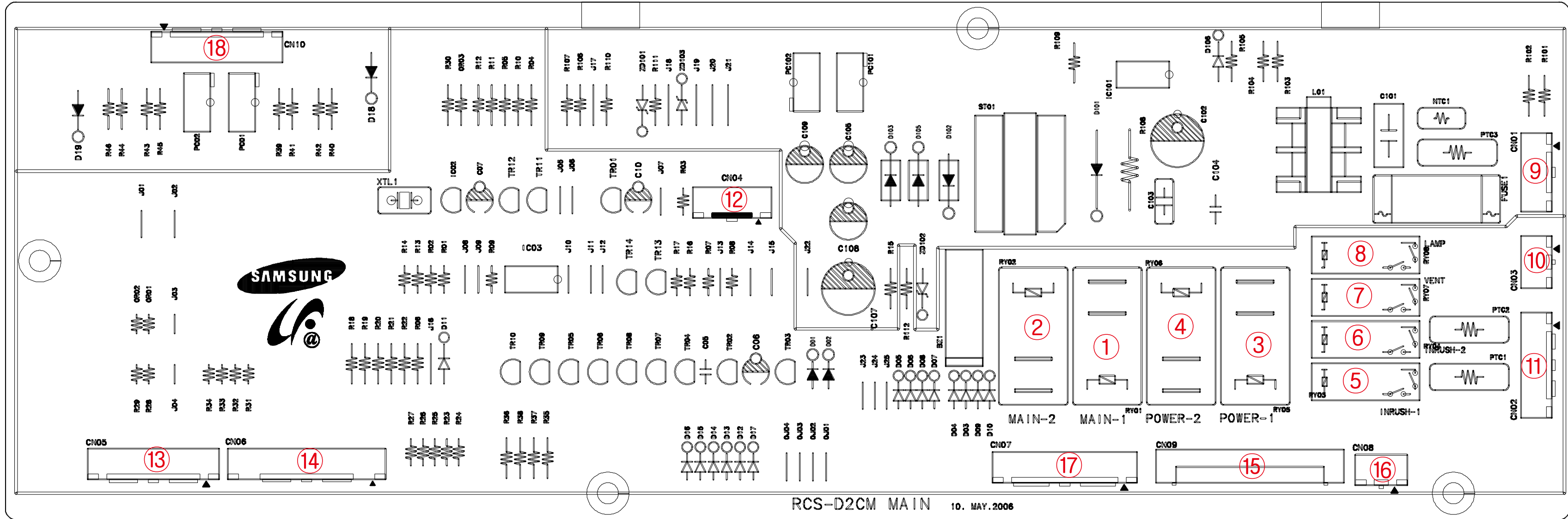
5. Exploded Views and Parts List

5-5 Standard Parts List

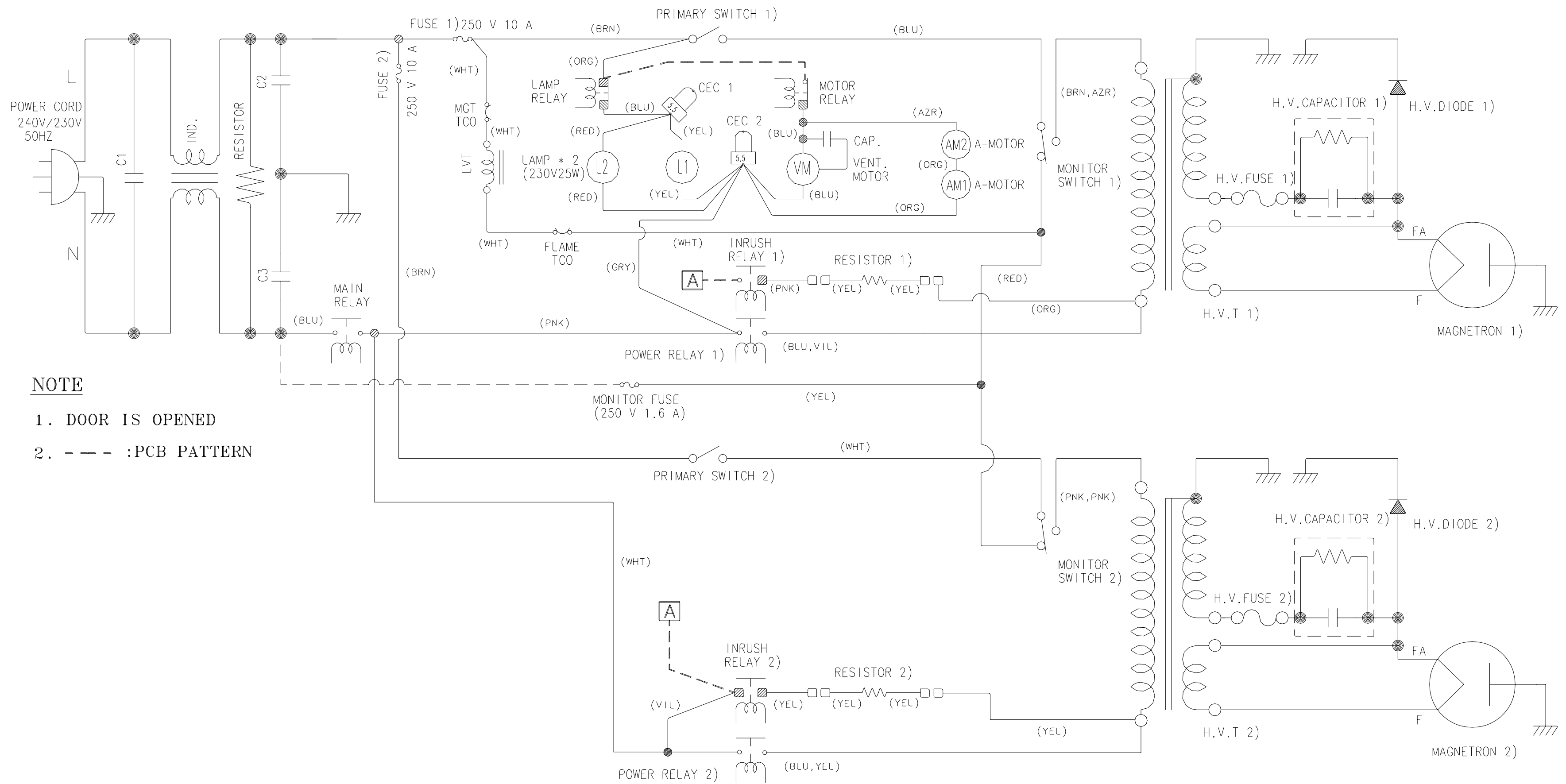
(S.N.A : SERVICE NOT AVAILABLE)

(CM1919)

Level	Code No.	Description	Specification	Q'ty	SA/ SNA	Remark
1-1	6002-000630	SCREW-TAPPING	PH,+2S,M3,L8,ZPC(YEL),SWR	4	SA	MAIN PCB
1-1	6002-001325	SCREW-TAPPING	TH,TORX,2S,M4,L12,ZPC(YEL)	2	SA	-
1-1	6002-001326	SCREW-TAPPING	OH,+1,M4,L8,NI PLT	10	SNA	BASE,COVER-LAMP,OUT PANEL SIDE
1-1	6006-001170	SCREW-ASSY TAPP	WS,TH,+M4,L10,ZPC(YEL)	3	SA	BKT-EARTH,P/C EARTH,S.MEM.EARTH
1-1	6006-001176	SCREW-ASSY TAPT	WT,PH,+M4,L8,ZPC(YEL)	8	SNA	BKT-HIN-L,BKT-HIN-U,BKT-MOTOR,DUCT-FAN,D
1-1	6011-001140	BOLT-STUD	M4,L8,NI PLT,BSW	2	SNA	-
1-1	DE60-10080A	SCREW-WASHER	-,-,-,M5,L12,-,2S,-,-	8	SA	HVT
1-1	DE60-10082I	SCREW-A	-,-,-,2S-4X10,FEFZY,-,-,-,-	12	SA	BODY-LATCH,C-PANEL,O/P
1-1	DE60-10199A	SCREW-WASHER	-,MSWR18C,4,L10,TH(WASHER),	17	SA	BACK - COVER,BKT LAMP HOL&BKT PCB,BKT-PC
1-1	DE60-20014A	BOLT-FLANGE	M5,L10,MSWR3,FEFZY,-,-,-,-,-	5	SA	HINGE DOOR LOWER,HINGE UPPER
1-1	DE60-30015A	NUT-FLANGE	M5,P0.8,MSWR10,FEFZY,-,-,-,-,-	8	SA	MGT
1-2	6006-001176	SCREW-ASSY TAPT	WT,PH,+M4,L8,ZPC(YEL)	4	SNA	HVD,HVC
1-2	DE60-10082I	SCREW-A	-,-,-,2S-4X10,FEFZY,-,-,-,-	5	SA	C-FILM,VENT-MOTOR
1-2	6006-001170	SCREW-ASSY TAPP	WS,TH,+M4,L10,ZPC(YEL)	2	SA	-
1-2	6001-000033	SCREW-MACHINE	TH,+M4,L10,-,STS304,-	2	SNA	-
1-2	6002-000239	SCREW-TAPPING	TH,+2S,M4,L8,ZPC(YEL),SM2	3	SNA	DECORATION
1-2	DE60-10045A	SCREW-TAP PH	-,-,FEFZY,-,PH,M3,-,L6,-,-	1	SA	TCO-DUCT
1-2	6002-000630	SCREW-TAPPING	PH,+2S,M3,L8,ZPC(YEL),SWR	2	SA	-
1-2	6002-000630	SCREW-TAPPING	PH,+2S,M3,L8,ZPC(YEL),SWR	2	SA	PCB
1-2	6002-001237	SCREW-TAPPING	PWH,+2,M3,L12,ZPC(YEL),SW	2	SNA	GUIDE START BUTTON



No.	Parts Number	Part Name	Function and Rule
1	RY01	Main-1 Relay	MW-1 , Lamp, Fan Control
2	RY02	Main-2 Relay	MW-2 Control (Model Option)
3	RY03	Inrush-1 Relay	When supply power to MW-1, Inrush Electric Current Decrease
4	RY04	Inrush-2 Relay	When supply power to MW-1, Inrush Electric Current Decrease (Model Option)
5	RY05	Power-1 Relay	MW-1 Power Control
6	RY06	Power-2 Relay	MW-2 Power Control (Model Option)
7	RY07	VENT Relay	Fan Motor Control
8	RY08	LAMP Relay	Lamp Motor Control
9	CN01	Power Connector	A Terminal for Connecting with Power supply
10	CN02	Relay Connector	A Terminal for Connecting with Lamp Relay Contact (Load Control)
11	CN03	Inrush Relay Connector	A Terminal for Connecting with Vent Relay & Inrush Relay1,2 Contact
12	CN04	Door switch and Humidity Sensing Connector	A Terminal for Connecting with Door Switch , Humidity Sensor
13	CN05	Display Connector 1	A Terminal for Connecting with Display
14	CN06	Display Connector 2	A Terminal for Connecting with Display
15	CN07	Membrane switch Connector	A Terminal for Connecting with Membrane switch (Model Option)
16	CN08	Tact switch Connector	A Terminal for Connecting with Tact Switch (Start and Cancel) (Model Option)
17	CN09	Tact & Encoder switch Connector	A Terminal for Connecting with Tact , Encoder Switch (Model Option)
18	CN09	MW1,2 Power Detector Connector	A Terminal for Connecting with MW1,2 Power Detector Connector



NOTE

1. DOOR IS OPENED
2. - - - :PCB PATTERN

